

## Product datasheet for **TA387013M**

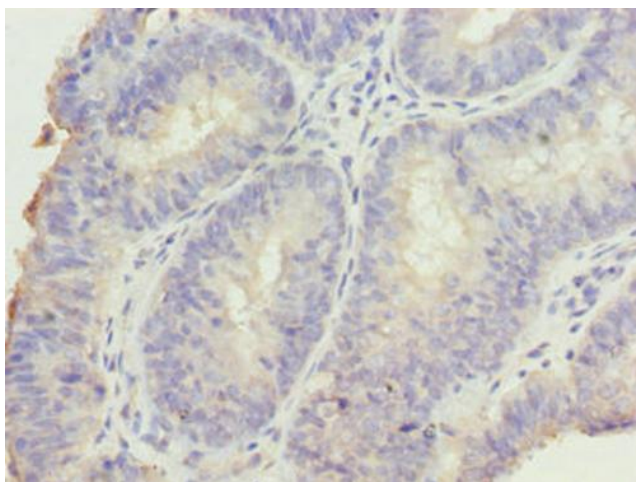
### DDI2 Rabbit Polyclonal Antibody

#### Product data:

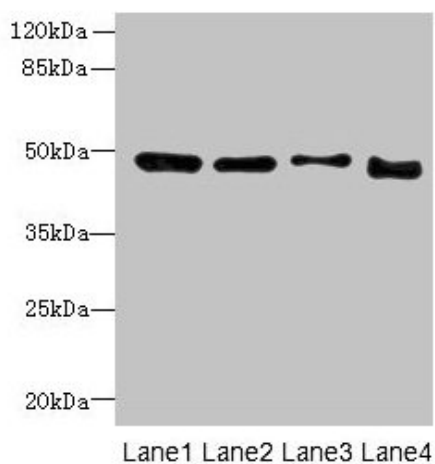
Product Type:	Primary Antibodies
Applications:	IHC, WB
Recommended Dilution:	Recommended dilution: WB:1:1000-1:5000, IHC:1:20-1:200
Reactivity:	Human
Host:	Rabbit
Isotype:	IgG
Clonality:	Polyclonal
Immunogen:	Recombinant Human Protein DDI1 homolog 2 protein (1-211AA)
Formulation:	Preservative: 0.03% Proclin 300 Constituents: 50% Glycerol, 0.01M PBS, PH 7.4
Concentration:	lot specific
Purification:	>95%, Protein G purified
Conjugation:	Unconjugated
Storage:	Upon receipt, store at -20°C or -80°C. Avoid repeated freeze.
Stability:	1 year from dispatch.
Database Link:	<a href="#">Q5TDH0</a>
Background:	Aspartic protease that mediates the cleavage of NFE2L1/NRF1 at 'Leu-104', thereby promoting release of NFE2L1/NRF1 from the endoplasmic reticulum membrane (PubMed:27676298, PubMed:27528193). Ubiquitination of NFE2L1/NRF1 is a prerequisite for cleavage, suggesting that DDI2 specifically recognizes and binds ubiquitinated NFE2L1/NRF1 (PubMed:27528193).

[View online »](#)

## Product images:



Immunohistochemistry of paraffin-embedded human endometrial cancer using [TA387013] at dilution of 1:100



### Western blot

All lanes: DDI2 antibody at 4μg/ml

Lane 1: A431 whole cell lysate

Lane 2: HL60 whole cell lysate

Lane 3: K562 whole cell lysate

Lane 4: Caco-2 whole cell lysate

Secondary

Goat polyclonal to rabbit IgG at 1/10000 dilution

Predicted band size: 45, 24, 47 kDa

Observed band size: 47 kDa