

Product datasheet for **TA387012**

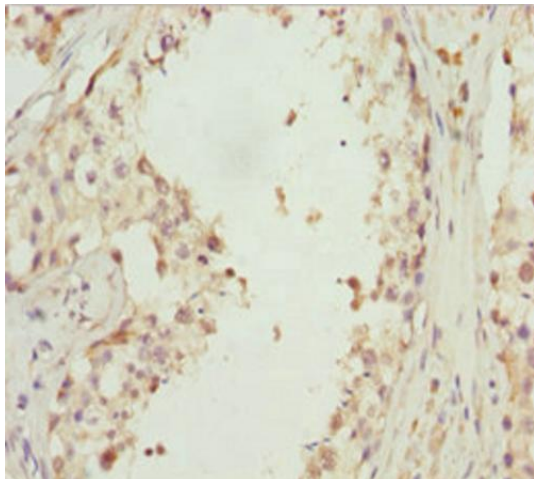
EFHC1 Rabbit Polyclonal Antibody

Product data:

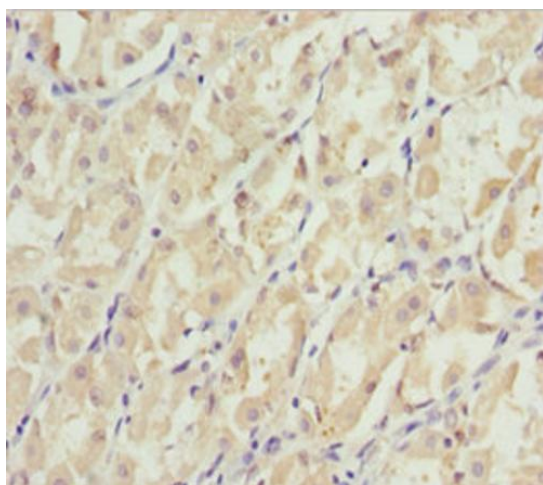
Product Type:	Primary Antibodies
Applications:	IHC, WB
Recommended Dilution:	Recommended dilution: WB:1:1000-1:5000, IHC:1:20-1:200
Reactivity:	Mouse, Human
Host:	Rabbit
Isotype:	IgG
Clonality:	Polyclonal
Immunogen:	Recombinant Human EF-hand domain-containing protein 1 protein (391-640AA)
Formulation:	PBS with 0.02% sodium azide, 50% glycerol, pH7.3.
Concentration:	lot specific
Purification:	Antigen Affinity Purified
Conjugation:	Unconjugated
Storage:	Upon receipt, store at -20°C or -80°C. Avoid repeated freeze.
Stability:	1 year from dispatch.
Database Link:	Q5JVL4
Background:	Necessary for radial and tangential cell migration during brain development, possibly acting as a regulator of cell morphology and process formation during migration (PubMed:22926142). May enhance calcium influx through CACNA1E and stimulate programmed cell death (PubMed:15258581).



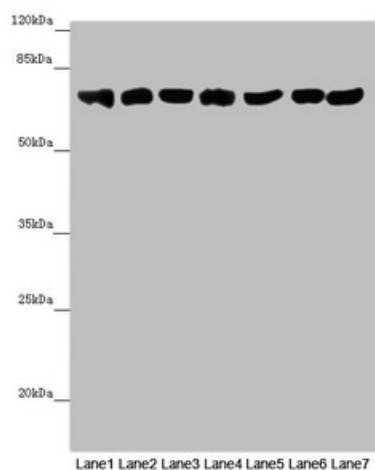
[View online »](#)

Product images:

Immunohistochemistry of paraffin-embedded human testis tissue using TA387012 at dilution of 1:100



Immunohistochemistry of paraffin-embedded human gastric cancer using TA387012 at dilution of 1:100



Western blot

All lanes: EFHC1 antibody at 9.9 $\mu\text{g/ml}$

Lane 1: Mouse large intestine tissue

Lane 2: Mouse stomach tissue

Lane 3: Mouse brain tissue

Lane 4: Mouse kidney tissue

Lane 5: Mouse gonadal tissue

Lane 6: Hela whole cell lysate

Lane 7: 293T whole cell lysate

Secondary

Goat polyclonal to rabbit IgG at 1/10000 dilution

Predicted band size: 74, 32, 73 kDa

Observed band size: 74 kDa