

Product datasheet for **TA387008M**

TBCE Rabbit Polyclonal Antibody

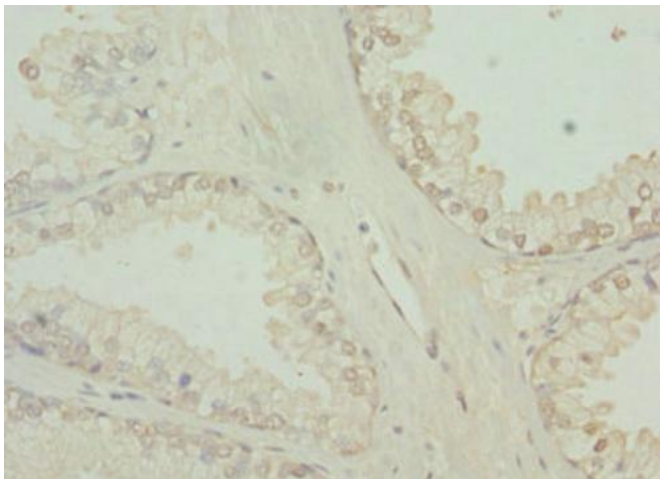
Product data:

Product Type:	Primary Antibodies
Applications:	IHC, WB
Recommended Dilution:	Recommended dilution: WB:1:1000-1:5000, IHC:1:20-1:200
Reactivity:	Human
Host:	Rabbit
Isotype:	IgG
Clonality:	Polyclonal
Immunogen:	Recombinant Human Tubulin-specific chaperone E protein (328-527AA)
Formulation:	PBS with 0.02% sodium azide, 50% glycerol, pH7.3.
Concentration:	lot specific
Purification:	Antigen Affinity Purified
Conjugation:	Unconjugated
Storage:	Upon receipt, store at -20°C or -80°C. Avoid repeated freeze.
Stability:	1 year from dispatch.
Database Link:	Q15813
Background:	Tubulin-folding protein; involved in the second step of the tubulin folding pathway. Seems to be implicated in the maintenance of the neuronal microtubule network. Involved in regulation of tubulin heterodimer dissociation.

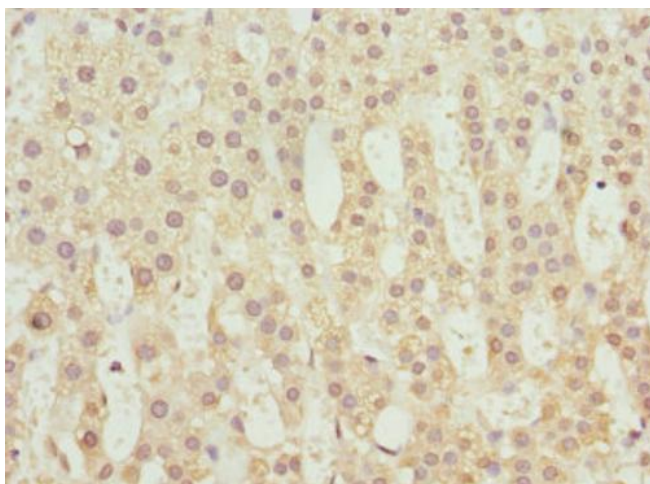


[View online »](#)

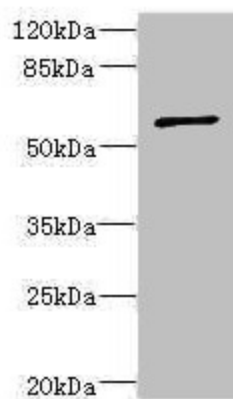
Product images:



Immunohistochemistry of paraffin-embedded human prostate cancer using [TA387008] at dilution of 1:100



Immunohistochemistry of paraffin-embedded human adrenal gland tissue using [TA387008] at dilution of 1:100



Western blot

All lanes: TBCE antibody at 5.55µg/ml + CEM whole cell lysate

Secondary

Goat polyclonal to rabbit IgG at 1/10000 dilution

Predicted band size: 60, 65 kDa

Observed band size: 60 kDa