

## Product datasheet for **TA387006M**

### CDSN Rabbit Polyclonal Antibody

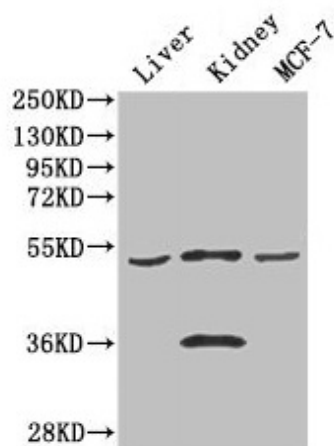
#### Product data:

Product Type:	Primary Antibodies
Applications:	IF, IHC, WB
Recommended Dilution:	Recommended dilution: WB:1:1000-1:5000, IHC:1:20-1:200, IF:1:50-1:200
Reactivity:	Mouse, Human
Host:	Rabbit
Isotype:	IgG
Clonality:	Polyclonal
Immunogen:	Recombinant Human Corneodesmosin protein (40-229AA)
Formulation:	Preservative: 0.03% Proclin 300 Constituents: 50% Glycerol, 0.01M PBS, PH 7.4
Concentration:	lot specific
Purification:	>95%, Protein G purified
Conjugation:	Unconjugated
Storage:	Upon receipt, store at -20°C or -80°C. Avoid repeated freeze.
Stability:	1 year from dispatch.
Database Link:	<a href="#">Q15517</a>
Background:	Important for the epidermal barrier integrity.



[View online »](#)

## Product images:

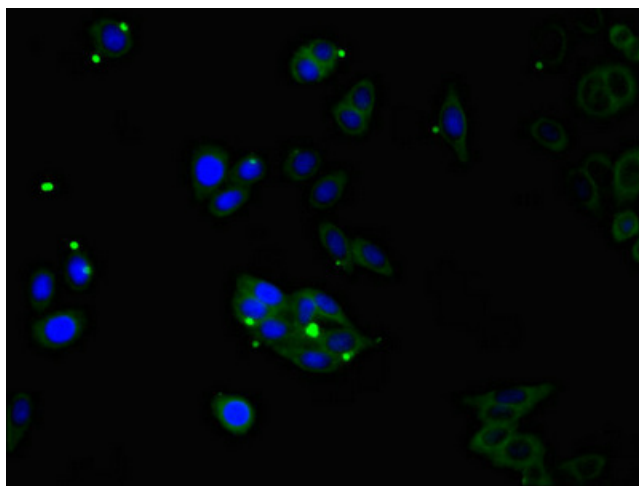


### Western Blot

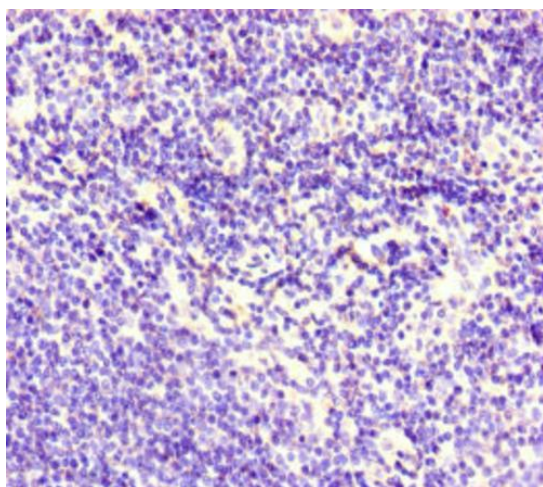
Positive WB detected in: Mouse liver tissue,  
Mouse kidney tissue, MCF-7 whole cell lysate  
All lanes: CDSN antibody at 3 $\mu$ g/ml

### Secondary

Goat polyclonal to rabbit IgG at 1/50000 dilution  
Predicted band size: 52 kDa  
Observed band size: 52, 36 kDa



Immunofluorescent analysis of HepG2 cells using  
[TA387006] at dilution of 1:100 and Alexa Fluor  
488-conjugated AffiniPure Goat Anti-Rabbit  
IgG(H+L)



Immunohistochemistry of paraffin-embedded human lymph node tissue using [TA387006] at dilution of 1:100