

Product datasheet for **TA387003**

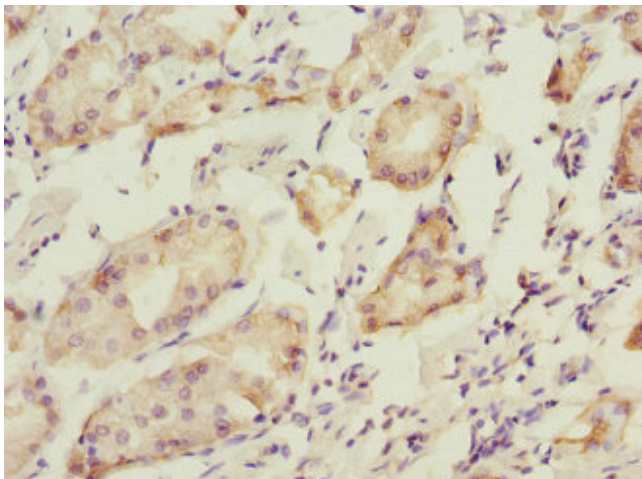
PDIA6 Rabbit Polyclonal Antibody

Product data:

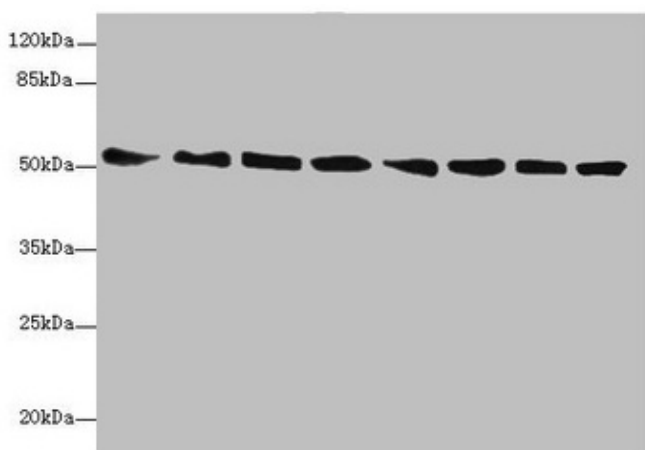
Product Type:	Primary Antibodies
Applications:	IHC, WB
Recommended Dilution:	Recommended dilution: WB:1:1000-1:5000, IHC:1:20-1:200
Reactivity:	Mouse, Human
Host:	Rabbit
Isotype:	IgG
Clonality:	Polyclonal
Immunogen:	Recombinant Human Protein disulfide-isomerase A6 protein (20-300AA)
Formulation:	PBS with 0.02% sodium azide, 50% glycerol, pH7.3.
Concentration:	lot specific
Purification:	Antigen Affinity Purified
Conjugation:	Unconjugated
Storage:	Upon receipt, store at -20°C or -80°C. Avoid repeated freeze.
Stability:	1 year from dispatch.
Database Link:	Q15084
Background:	May function as a chaperone that inhibits aggregation of misfolded proteins. Plays a role in platelet aggregation and activation by agonists such as convulxin, collagen and thrombin.



[View online »](#)

Product images:

Immunohistochemistry of paraffin-embedded human gastric cancer using TA387003 at dilution of 1:100

**Western blot**

All lanes: PDIA6 antibody at 5.9 μ g/ml

Lane 1: Mouse heart tissue

Lane 2: Mouse lung tissue

Lane 3: Mouse liver tissue

Lane 4: 293T whole cell lysate

Lane 5: Hela whole cell lysate

Lane 6: HL60 whole cell lysate

Lane 7: HepG2 whole cell lysate

Lane 8: THP-1 whole cell lysate

Secondary

Goat polyclonal to rabbit IgG at 1/10000 dilution

Predicted band size: 49, 54, 48 kDa

Observed band size: 54 kDa