

## Product datasheet for **TA386990M**

### EEF1A2 Rabbit Polyclonal Antibody

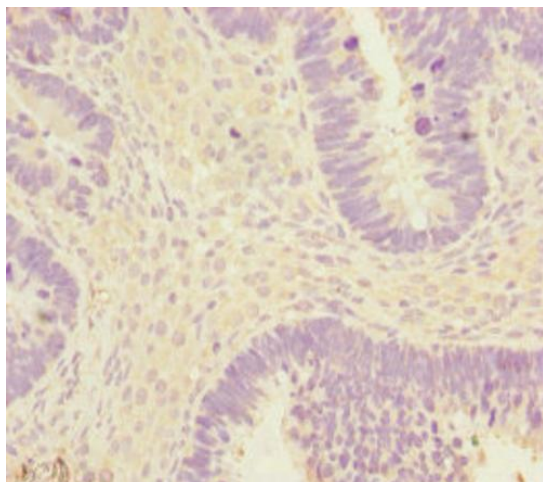
#### Product data:

Product Type:	Primary Antibodies
Applications:	IHC, WB
Recommended Dilution:	Recommended dilution: WB:1:1000-1:5000, IHC:1:20-1:200
Reactivity:	Human
Host:	Rabbit
Isotype:	IgG
Clonality:	Polyclonal
Immunogen:	Recombinant Human Elongation factor 1-alpha 2 protein (184-463AA)
Formulation:	PBS with 0.02% sodium azide, 50% glycerol, pH7.3.
Concentration:	lot specific
Purification:	Antigen Affinity Purified
Conjugation:	Unconjugated
Storage:	Upon receipt, store at -20°C or -80°C. Avoid repeated freeze.
Stability:	1 year from dispatch.
Database Link:	<a href="#">Q05639</a>
Background:	This protein promotes the GTP-dependent binding of aminoacyl-tRNA to the A-site of ribosomes during protein biosynthesis.

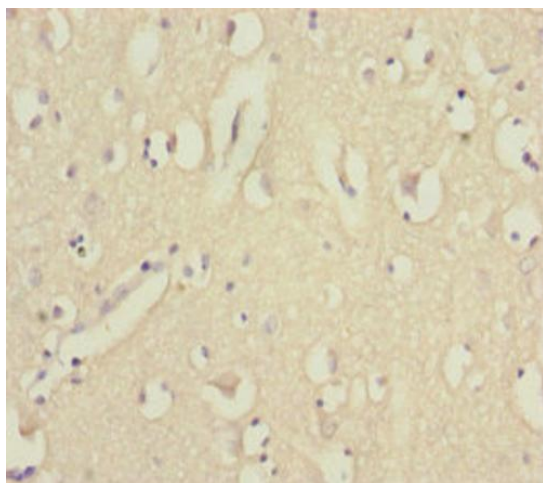


[View online »](#)

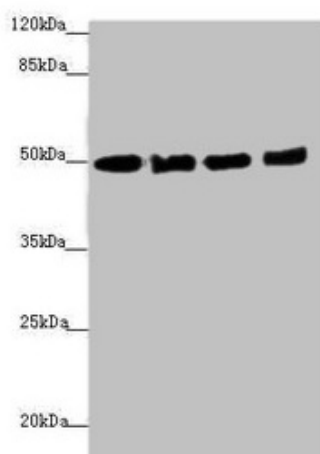
## Product images:



Immunohistochemistry of paraffin-embedded human ovarian cancer using [TA386990] at dilution of 1:100



Immunohistochemistry of paraffin-embedded human brain tissue using [TA386990] at dilution of 1:100



#### Western blot

All lanes: EEF1A2 antibody at 1.46µg/ml

Lane 1: MCF-7 whole cell lysate

Lane 2: Hela whole cell lysate

Lane 3: Raji whole cell lysate

Lane 4: A431 whole cell lysate

#### Secondary

Goat polyclonal to rabbit IgG at 1/10000 dilution

Predicted band size: 50 kDa

Observed band size: 50 kDa