

Product datasheet for **TA386988**

ROM1 Rabbit Polyclonal Antibody

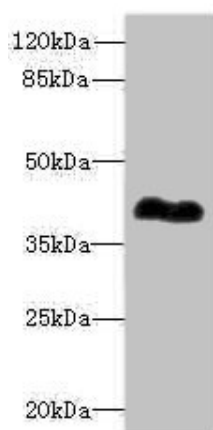
Product data:

Product Type:	Primary Antibodies
Applications:	WB
Recommended Dilution:	Recommended dilution: WB:1:1000-1:5000
Reactivity:	Mouse, Human
Host:	Rabbit
Isotype:	IgG
Clonality:	Polyclonal
Immunogen:	Recombinant Human Rod outer segment membrane protein 1 protein (126-263AA)
Formulation:	PBS with 0.02% sodium azide, 50% glycerol, pH7.3.
Concentration:	lot specific
Purification:	Antigen Affinity Purified
Conjugation:	Unconjugated
Storage:	Upon receipt, store at -20°C or -80°C. Avoid repeated freeze.
Stability:	1 year from dispatch.
Database Link:	Q03395
Background:	May function as an adhesion molecule involved in stabilization and compaction of outer segment disks or in the maintenance of the curvature of the rim. It is essential for disk morphogenesis.



[View online »](#)

Product images:



Western blot

All lanes: ROM1 antibody at 0.98µg/ml + Mouse ocular tissue

Secondary

Goat polyclonal to rabbit IgG at 1/10000 dilution

Predicted band size: 37 kDa

Observed band size: 37 kDa