

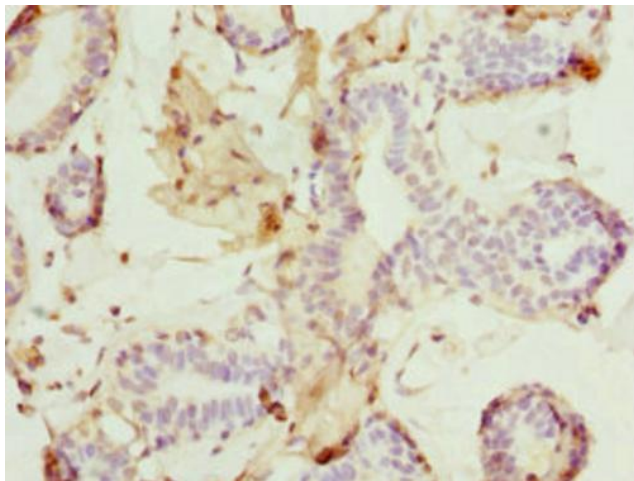
Product datasheet for **TA386986M**

DR1 Rabbit Polyclonal Antibody

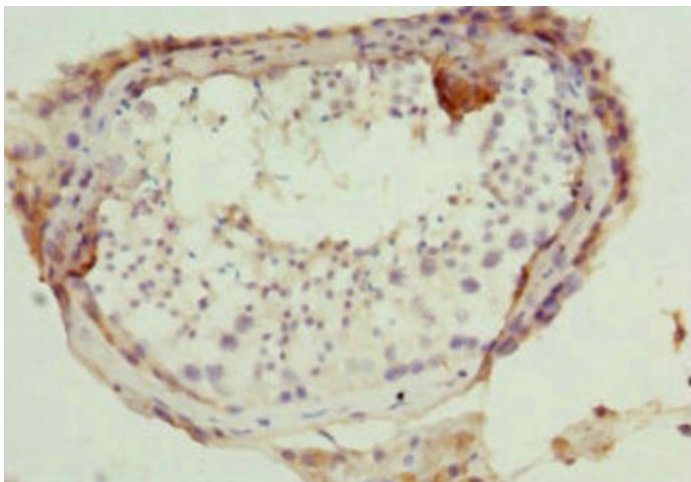
Product data:

Product Type:	Primary Antibodies
Applications:	IHC, WB
Recommended Dilution:	Recommended dilution: WB:1:1000-1:5000, IHC:1:20-1:200
Reactivity:	Rat, Human
Host:	Rabbit
Isotype:	IgG
Clonality:	Polyclonal
Immunogen:	Recombinant Human Protein Dr1 protein (1-176AA)
Formulation:	PBS with 0.02% sodium azide, 50% glycerol, pH7.3.
Concentration:	lot specific
Purification:	Antigen Affinity Purified
Conjugation:	Unconjugated
Storage:	Upon receipt, store at -20°C or -80°C. Avoid repeated freeze.
Stability:	1 year from dispatch.
Database Link:	Q01658
Background:	The association of the DR1/DRAP1 heterodimer with TBP results in a functional repression of both activated and basal transcription of class II genes. This interaction precludes the formation of a transcription-competent complex by inhibiting the association of TFIIA and/or TFIIB with TBP. Can bind to DNA on its own. Component of the ATAC complex, a complex with histone acetyltransferase activity on histones H3 and H4.

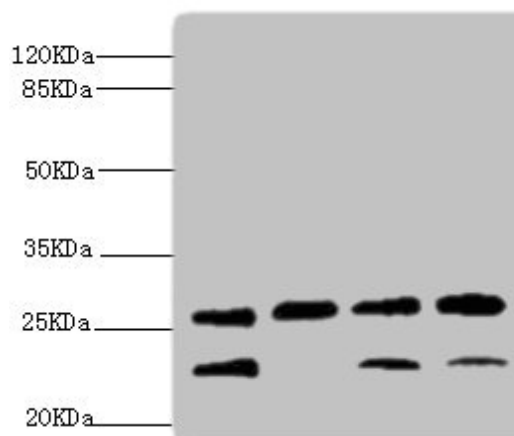
[View online »](#)

Product images:

Immunohistochemistry of paraffin-embedded human breast cancer using [TA386986] at dilution of 1:100



Immunohistochemistry of paraffin-embedded human testis tissue using [TA386986] at dilution of 1:100



Western blot

All lanes: DR1 antibody at 2.32 μ g/ml

Lane 1: Rat gonad tissue

Lane 2: PC-3 whole cell lysate

Lane 3: Hela whole cell lysate

Lane 4: 293T whole cell lysate

Secondary

Goat polyclonal to rabbit IgG at 1/10000 dilution

Predicted band size: 19 kDa

Observed band size: 23, 26 kDa