

Product datasheet for **TA386984M**

MRPS22 Rabbit Polyclonal Antibody

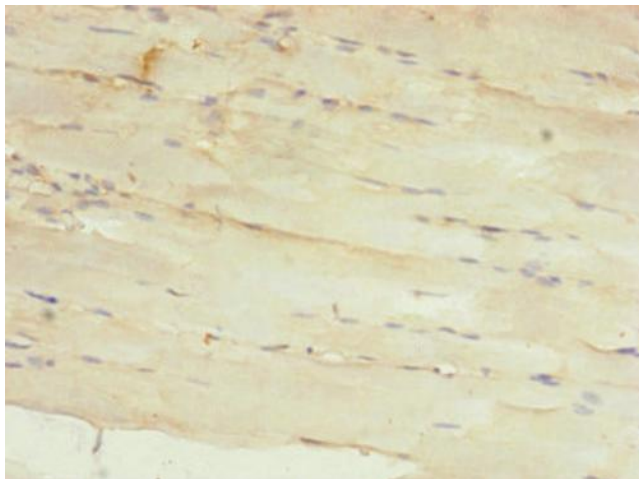
Product data:

Product Type:	Primary Antibodies
Applications:	IHC, WB
Recommended Dilution:	Recommended dilution: WB:1:1000-1:5000, IHC:1:20-1:200
Reactivity:	Mouse, Human
Host:	Rabbit
Isotype:	IgG
Clonality:	Polyclonal
Immunogen:	Recombinant Human 28S ribosomal protein S22, mitochondrial protein (1-360AA)
Formulation:	PBS with 0.02% sodium azide, 50% glycerol, pH7.3.
Concentration:	lot specific
Purification:	Antigen Affinity Purified
Conjugation:	Unconjugated
Storage:	Upon receipt, store at -20°C or -80°C. Avoid repeated freeze.
Stability:	1 year from dispatch.
Database Link:	P82650
Background:	mitochondrial inner membrane, mitochondrial ribosome, mitochondrial small ribosomal subunit, mitochondrion, structural constituent of ribosome, mitochondrial translational elongation, mitochondrial translational termination

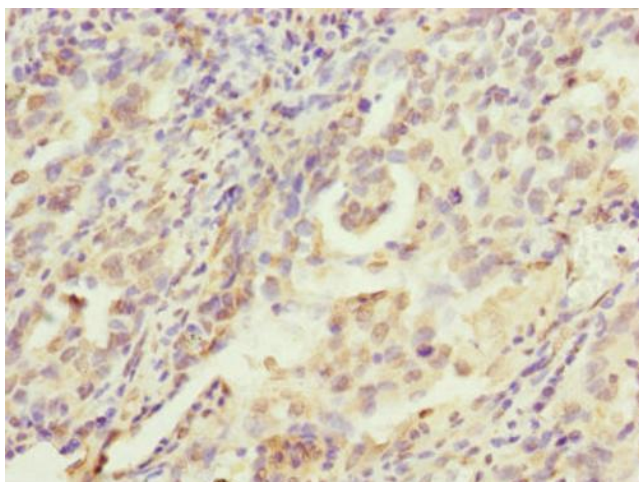


[View online »](#)

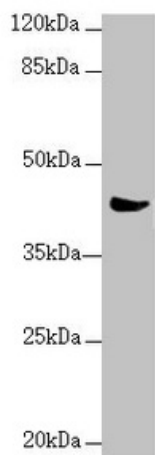
Product images:



Immunohistochemistry of paraffin-embedded human skeletal muscle tissue using [TA386984] at dilution of 1:100



Immunohistochemistry of paraffin-embedded human lung cancer using [TA386984] at dilution of 1:100



Western blot

All lanes: MRPS22 antibody at 2.36 µg/ml +

Mouse liver tissue

Secondary

Goat polyclonal to rabbit IgG at 1/10000 dilution

Predicted band size: 42, 19 kDa

Observed band size: 42 kDa