

## Product datasheet for **TA386984**

### MRPS22 Rabbit Polyclonal Antibody

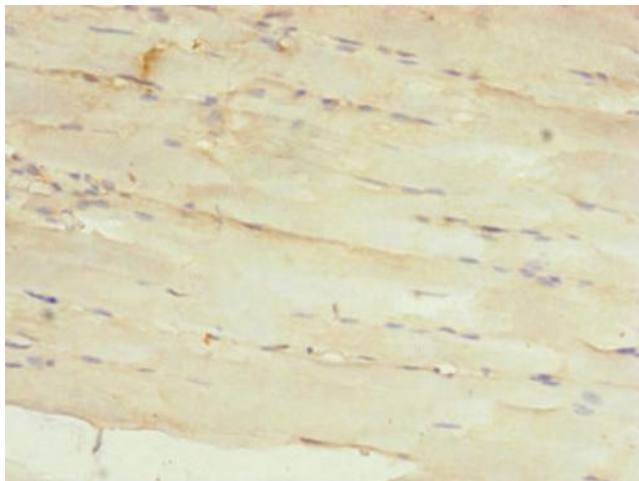
#### Product data:

|                       |   |
|-----------------------|---|
| Product Type:         | Primary Antibodies  |
| Applications:         | IHC, WB   |
| Recommended Dilution: | Recommended dilution: WB:1:1000-1:5000, IHC:1:20-1:200  |
| Reactivity:           | Mouse, Human  |
| Host:                 | Rabbit  |
| Isotype:              | IgG   |
| Clonality:            | Polyclonal  |
| Immunogen:            | Recombinant Human 28S ribosomal protein S22, mitochondrial protein (1-360AA)  |
| Formulation:          | PBS with 0.02% sodium azide, 50% glycerol, pH7.3.   |
| Concentration:        | lot specific  |
| Purification:         | Antigen Affinity Purified   |
| Conjugation:          | Unconjugated  |
| Storage:              | Upon receipt, store at -20°C or -80°C. Avoid repeated freeze.   |
| Stability:            | 1 year from dispatch.   |
| Database Link:        | <a href="#">P82650</a>  |
| Background:           | mitochondrial inner membrane, mitochondrial ribosome, mitochondrial small ribosomal subunit, mitochondrion, structural constituent of ribosome, mitochondrial translational elongation, mitochondrial translational termination |

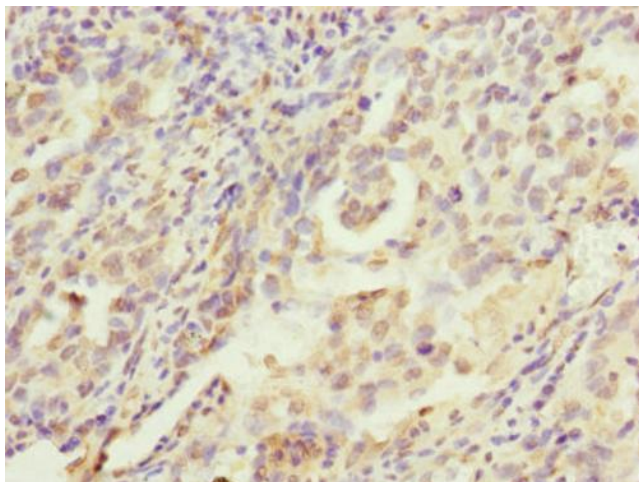


[View online »](#)

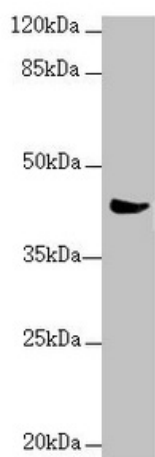
## Product images:



Immunohistochemistry of paraffin-embedded human skeletal muscle tissue using TA386984 at dilution of 1:100



Immunohistochemistry of paraffin-embedded human lung cancer using TA386984 at dilution of 1:100



Western blot

All lanes: MRPS22 antibody at 2.36 µg/ml +

Mouse liver tissue

Secondary

Goat polyclonal to rabbit IgG at 1/10000 dilution

Predicted band size: 42, 19 kDa

Observed band size: 42 kDa