

## Product datasheet for **TA386980**

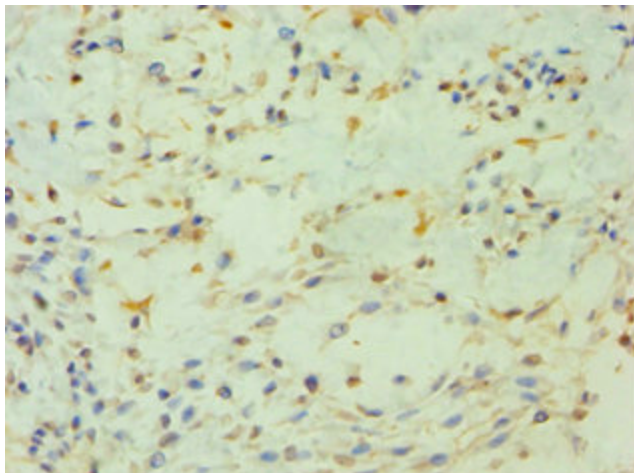
### PIP4K2B Rabbit Polyclonal Antibody

#### Product data:

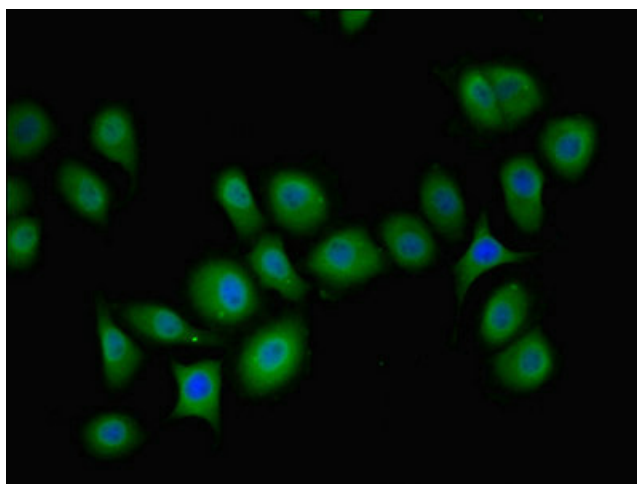
Product Type:	Primary Antibodies
Applications:	IF, IHC, WB
Recommended Dilution:	Recommended dilution: WB:1:500-1:2000, IHC:1:20-1:200, IF:1:50-1:200
Reactivity:	Human
Host:	Rabbit
Isotype:	IgG
Clonality:	Polyclonal
Immunogen:	Recombinant Human Phosphatidylinositol 5-phosphate 4-kinase type-2 beta protein (1-270AA)
Formulation:	PBS with 0.02% sodium azide, 50% glycerol, pH7.3.
Concentration:	lot specific
Purification:	Antigen Affinity Purified
Conjugation:	Unconjugated
Storage:	Upon receipt, store at -20°C or -80°C. Avoid repeated freeze.
Stability:	1 year from dispatch.
Database Link:	<a href="#">P78356</a>
Background:	Participates in the biosynthesis of phosphatidylinositol 4,5-bisphosphate.



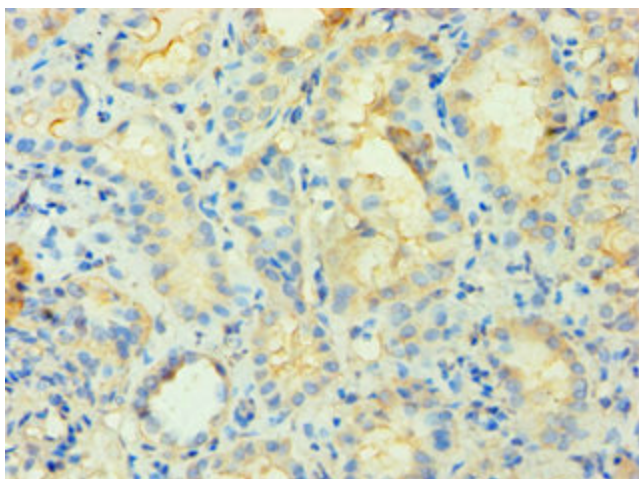
[View online »](#)

**Product images:**

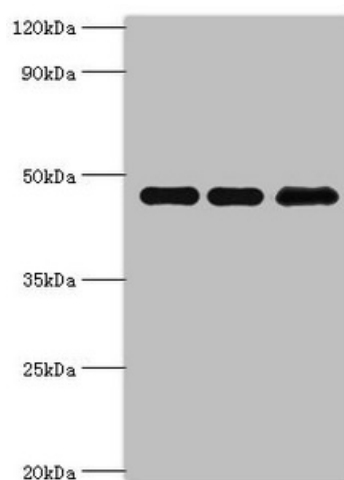
Immunohistochemistry of paraffin-embedded human breast cancer using TA386980 at dilution of 1:100



Immunofluorescent analysis of A549 cells using TA386980 at dilution of 1:100 and Alexa Fluor 488-conjugated AffiniPure Goat Anti-Rabbit IgG(H+L)



Immunohistochemistry of paraffin-embedded human kidney tissue using TA386980 at dilution of 1:100



Western blot

All lanes: Phosphatidylinositol 5-phosphate 4-kinase type-2 beta antibody at 10 $\mu$ g/ml

Lane 1: HeLa whole cell lysate

Lane 2: MCF-7 whole cell lysate

Lane 3: 293T whole cell lysate

Secondary

Goat polyclonal to rabbit IgG at 1/10000 dilution

Predicted band size: 48, 33 kDa

Observed band size: 48 kDa