

## Product datasheet for **TA386978**

### CALM2 Rabbit Polyclonal Antibody

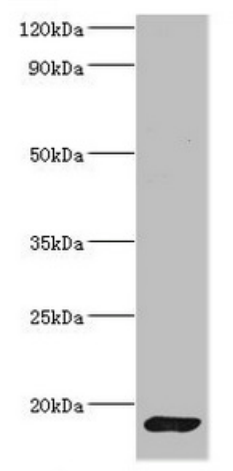
#### Product data:

Product Type:	Primary Antibodies
Applications:	WB
Recommended Dilution:	Recommended dilution: WB:1:1000-1:5000
Reactivity:	Mouse, Human
Host:	Rabbit
Isotype:	IgG
Clonality:	Polyclonal
Immunogen:	Recombinant Human Calmodulin protein (2-149AA)
Formulation:	Preservative: 0.03% Proclin 300 Constituents: 50% Glycerol, 0.01M PBS, PH 7.4
Concentration:	lot specific
Purification:	>95%, Protein G purified
Conjugation:	Unconjugated
Storage:	Upon receipt, store at -20°C or -80°C. Avoid repeated freeze.
Stability:	1 year from dispatch.
Database Link:	<a href="#">P62158</a>
Background:	Calmodulin mediates the control of a large number of enzymes, ion channels, aquaporins and other proteins by Ca <sup>2+</sup> . Among the enzymes to be stimulated by the calmodulin-Ca <sup>2+</sup> complex are a number of protein kinases and phosphatases. Together with CCP110 and centrin, is involved in a genetic pathway that regulates the centrosome cycle and progression through cytokinesis.



[View online »](#)

## Product images:



Western blot

All lanes: CALM1 antibody at 2 $\mu$ g/ml + Mouse skeletal muscle tissue

Secondary

Goat polyclonal to rabbit IgG at 1/10000 dilution

Predicted band size: 17 kDa

Observed band size: 17 kDa