

## Product datasheet for **TA386965M**

### NDUFV1 Rabbit Polyclonal Antibody

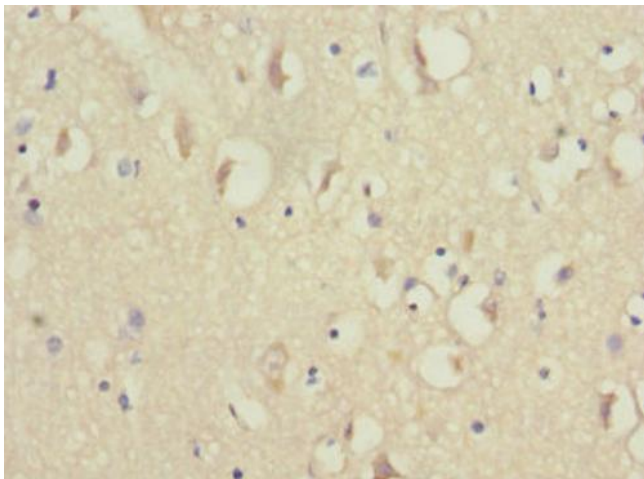
#### Product data:

Product Type:	Primary Antibodies
Applications:	IHC, WB
Recommended Dilution:	Recommended dilution: WB:1:1000-1:5000, IHC:1:20-1:200
Reactivity:	Human
Host:	Rabbit
Isotype:	IgG
Clonality:	Polyclonal
Immunogen:	Recombinant Human NADH dehydrogenase [ubiquinone] flavoprotein 1, mitochondrial protein (1-250AA)
Formulation:	PBS with 0.02% sodium azide, 50% glycerol, pH7.3.
Concentration:	lot specific
Purification:	Antigen Affinity Purified
Conjugation:	Unconjugated
Storage:	Upon receipt, store at -20°C or -80°C. Avoid repeated freeze.
Stability:	1 year from dispatch.
Database Link:	<a href="#">P49821</a>
Background:	Core subunit of the mitochondrial membrane respiratory chain NADH dehydrogenase (Complex I) that is believed to belong to the minimal assembly required for catalysis. Complex I functions in the transfer of electrons from NADH to the respiratory chain. The immediate electron acceptor for the enzyme is believed to be ubiquinone (By similarity).

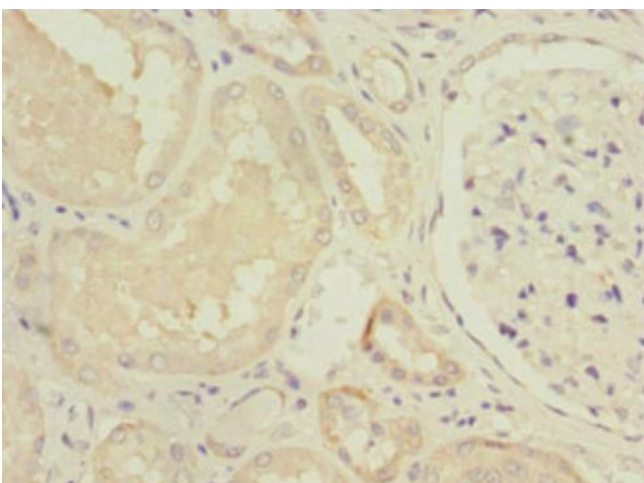


[View online »](#)

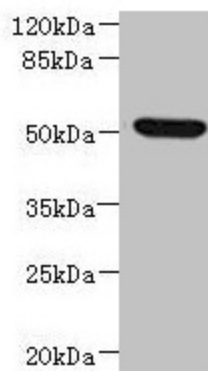
## Product images:



Immunohistochemistry of paraffin-embedded human brain tissue using [TA386965] at dilution of 1:100



Immunohistochemistry of paraffin-embedded human kidney tissue using [TA386965] at dilution of 1:100



Western blot

All lanes: NDUFV1 antibody at 3.46µg/ml + HepG2 whole cell lysate

Secondary

Goat polyclonal to rabbit IgG at 1/10000 dilution

Predicted band size: 51, 50 kDa

Observed band size: 51 kDa