

## Product datasheet for **TA386964**

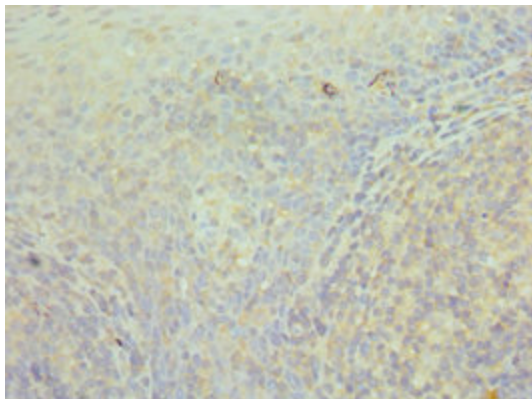
### CCT3 Rabbit Polyclonal Antibody

#### Product data:

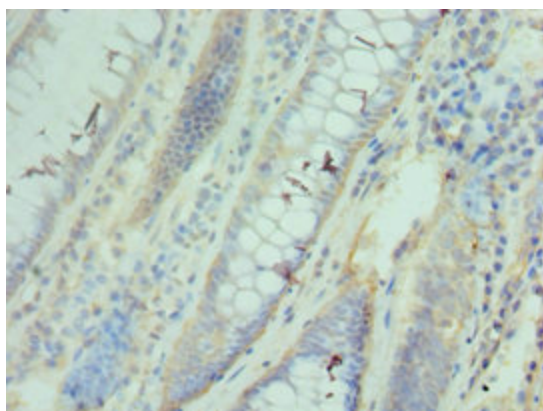
Product Type:	Primary Antibodies
Applications:	IHC, WB
Recommended Dilution:	Recommended dilution: WB:1:500-1:2000, IHC:1:20-1:200
Reactivity:	Mouse, Human
Host:	Rabbit
Isotype:	IgG
Clonality:	Polyclonal
Immunogen:	Recombinant Human T-complex protein 1 subunit gamma protein (1-300AA)
Formulation:	PBS with 0.02% sodium azide, 50% glycerol, pH7.3.
Concentration:	lot specific
Purification:	Antigen Affinity purified
Conjugation:	Unconjugated
Storage:	Upon receipt, store at -20°C or -80°C. Avoid repeated freeze.
Stability:	1 year from dispatch.
Database Link:	<a href="#">P49368</a>
Background:	Molecular chaperone; assists the folding of proteins upon ATP hydrolysis. As part of the BBS/CCT complex may play a role in the assembly of BBSome, a complex involved in ciliogenesis regulating transports vesicles to the cilia. Known to play a role, in vitro, in the folding of actin and tubulin.



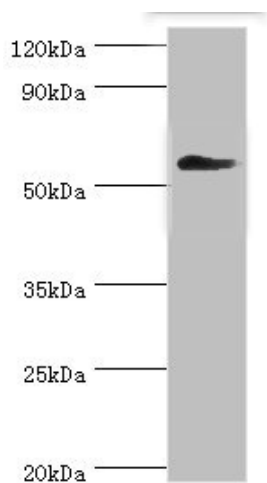
[View online »](#)

**Product images:**

Immunohistochemistry of paraffin-embedded human tonsil tissue using TA386964 at dilution of 1:100



Immunohistochemistry of paraffin-embedded human colon cancer using TA386964 at dilution of 1:100



Western blot

All lanes: T-complex protein 1 subunit gamma antibody at 12 $\mu$ g/ml + Mouse brain tissue  
Secondary

Goat polyclonal to rabbit IgG at 1/10000 dilution  
Predicted band size: 61, 57 kDa  
Observed band size: 61 kDa