

Product datasheet for **TA386963M**

IREB2 Rabbit Polyclonal Antibody

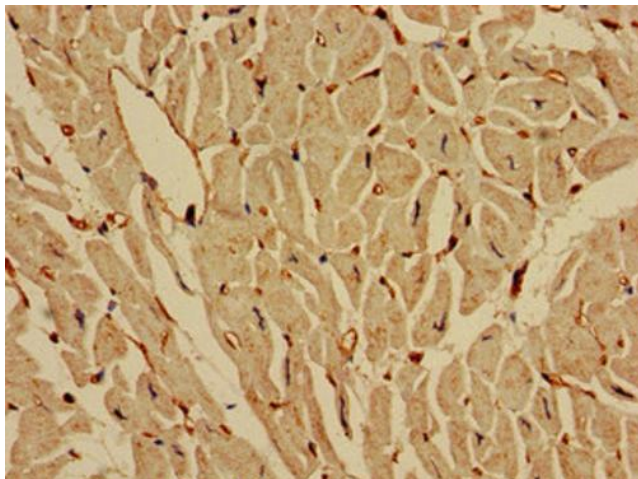
Product data:

Product Type:	Primary Antibodies
Applications:	IHC, WB
Recommended Dilution:	Recommended dilution: WB:1:500-1:5000, IHC:1:20-1:200
Reactivity:	Mouse, Human
Host:	Rabbit
Isotype:	IgG
Clonality:	Polyclonal
Immunogen:	Recombinant Human Iron-responsive element-binding protein 2 protein (107-216AA)
Formulation:	Preservative: 0.03% Proclin 300 Constituents: 50% Glycerol, 0.01M PBS, pH 7.4
Concentration:	lot specific
Purification:	>95%, Protein G purified
Conjugation:	Unconjugated
Storage:	Upon receipt, store at -20°C or -80°C. Avoid repeated freeze.
Stability:	1 year from dispatch.
Database Link:	P48200
Background:	RNA-binding protein that binds to iron-responsive elements (IRES), which are stem-loop structures found in the 5'-UTR of ferritin, and delta aminolevulinic acid synthase mRNAs, and in the 3'-UTR of transferrin receptor mRNA. Binding to the IRE element in ferritin results in the repression of its mRNA translation. Binding of the protein to the transferrin receptor mRNA inhibits the degradation of this otherwise rapidly degraded mRNA.

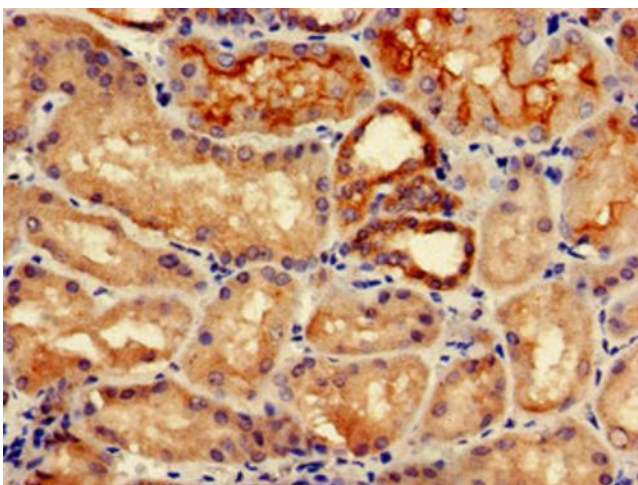


[View online »](#)

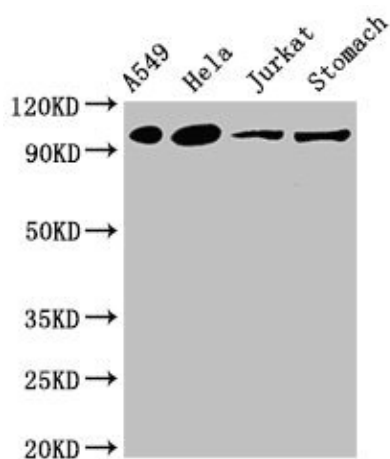
Product images:



Immunohistochemistry of paraffin-embedded human heart tissue using [TA386963] at dilution of 1:100



Immunohistochemistry of paraffin-embedded human kidney tissue using [TA386963] at dilution of 1:100



Western Blot

Positive WB detected in: A549 whole cell lysate, HeLa whole cell lysate, Jurkat whole cell lysate, Mouse stomach tissue

All lanes: IREB2 antibody at 4µg/ml

Secondary

Goat polyclonal to rabbit IgG at 1/50000 dilution

Predicted band size: 106, 38 kDa

Observed band size: 106 kDa