

Product datasheet for **TA386962**

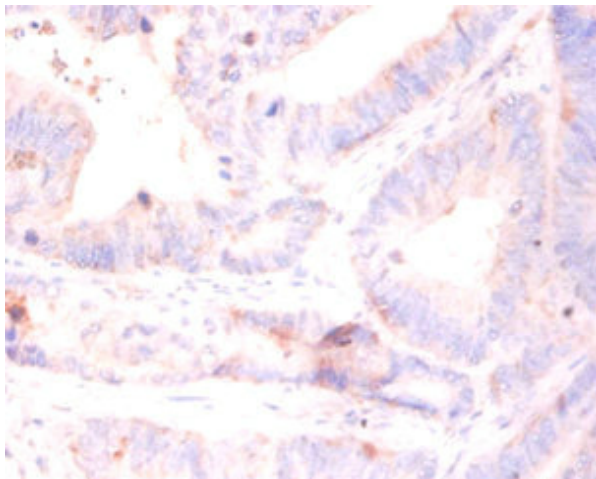
RPL5 Rabbit Polyclonal Antibody

Product data:

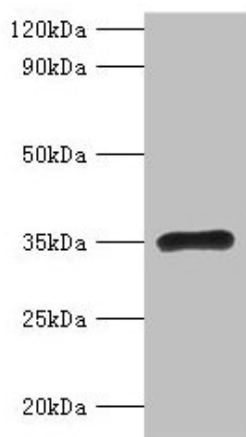
Product Type:	Primary Antibodies
Applications:	IHC, WB
Recommended Dilution:	Recommended dilution: WB:1:1000-1:5000, IHC:1:20-1:200
Reactivity:	Human
Host:	Rabbit
Isotype:	IgG
Clonality:	Polyclonal
Immunogen:	Recombinant Human 60S ribosomal protein L5 protein (2-297AA)
Formulation:	Preservative: 0.03% Proclin 300 Constituents: 50% Glycerol, 0.01M PBS, PH 7.4
Concentration:	lot specific
Purification:	>95%, Protein G purified
Conjugation:	Unconjugated
Storage:	Upon receipt, store at -20°C or -80°C. Avoid repeated freeze.
Stability:	1 year from dispatch.
Database Link:	P46777
Background:	Required for rRNA maturation and formation of the 60S ribosomal subunits. This protein binds 5S RNA.



[View online »](#)

Product images:

Immunohistochemistry of paraffin-embedded human colon cancer using TA386962 at dilution of 1:50



Western blot
All lanes: RPL5 antibody at 2 μ g/ml + EC109 whole cell lysate
Secondary
Goat polyclonal to rabbit IgG at 1/15000 dilution
Predicted band size: 35 kDa
Observed band size: 35 kDa