

Product datasheet for **TA386961M**

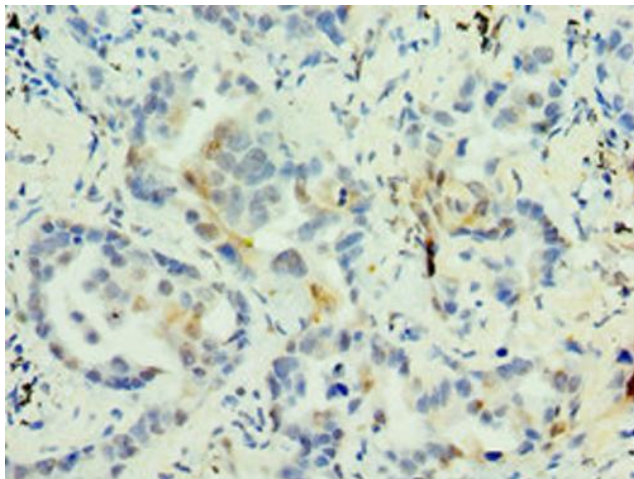
MAGEA6 Rabbit Polyclonal Antibody

Product data:

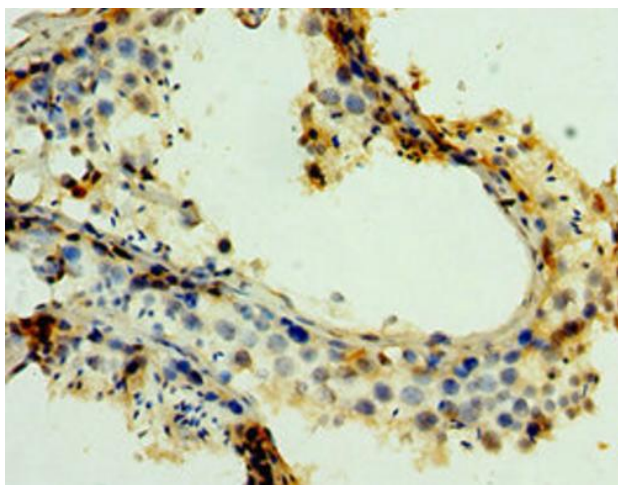
Product Type:	Primary Antibodies
Applications:	IHC, WB
Recommended Dilution:	Recommended dilution: WB:1:500-1:2000, IHC:1:20-1:200
Reactivity:	Rat, Human
Host:	Rabbit
Isotype:	IgG
Clonality:	Polyclonal
Immunogen:	Recombinant Human Melanoma-associated antigen 6 protein (75-314AA)
Formulation:	PBS with 0.02% sodium azide, 50% glycerol, pH7.3.
Concentration:	lot specific
Purification:	Antigen Affinity Purified
Conjugation:	Unconjugated
Storage:	Upon receipt, store at -20°C or -80°C. Avoid repeated freeze.
Stability:	1 year from dispatch.
Database Link:	P43360
Background:	Proposed to enhance ubiquitin ligase activity of RING-type zinc finger-containing E3 ubiquitin-protein ligases. May enhance ubiquitin ligase activity of TRIM28 and stimulate p53/TP53 ubiquitination by TRIM28. Proposed to act through recruitment and/or stabilization of the Ubl-conjugating enzyme (E2) at the E3:substrate complex. May play a role in tumor transformation or aspects of tumor progression. In vitro promotes cell viability in melanoma cell lines.

[View online »](#)

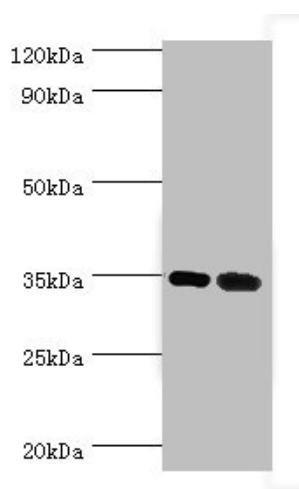
Product images:



Immunohistochemistry of paraffin-embedded human lung cancer using [TA386961] at dilution of 1:100



Immunohistochemistry of paraffin-embedded human testis tissue using [TA386961] at dilution of 1:100



Western blot

All lanes: MAGEA6 antibody at 7 μ g/ml

Lane 1: Rat brain tissue

Lane 2: Rat gonad tissue

Secondary

Goat polyclonal to rabbit IgG at 1/10000 dilution

Predicted band size: 35 kDa

Observed band size: 35 kDa