

## Product datasheet for **TA386955**

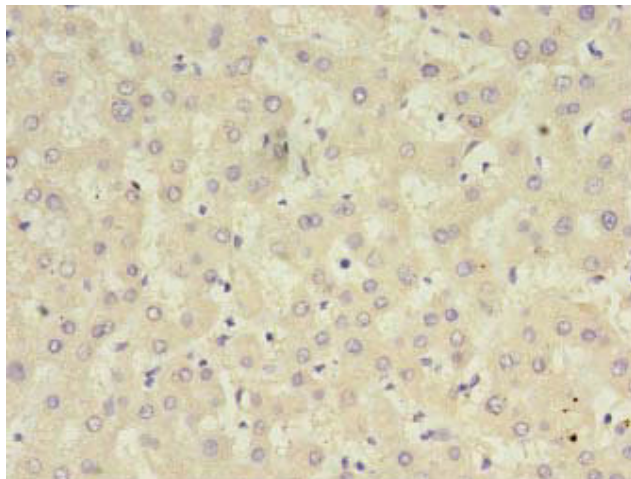
### CFHR2 Rabbit Polyclonal Antibody

#### Product data:

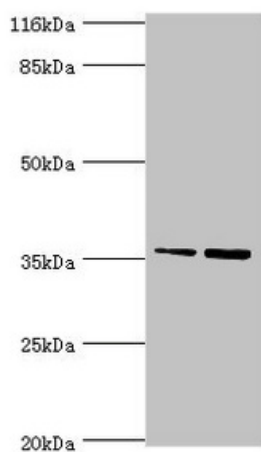
Product Type:	Primary Antibodies
Applications:	IHC, WB
Recommended Dilution:	Recommended dilution: WB:1:500-1:5000, IHC:1:20-1:200
Reactivity:	Human
Host:	Rabbit
Isotype:	IgG
Clonality:	Polyclonal
Immunogen:	Recombinant Human Complement factor H-related protein 2 protein (20-269AA)
Formulation:	Preservative: 0.03% Proclin 300 Constituents: 50% Glycerol, 0.01M PBS, PH 7.4
Concentration:	lot specific
Purification:	>95%, Protein G purified
Conjugation:	Unconjugated
Storage:	Upon receipt, store at -20°C or -80°C. Avoid repeated freeze.
Stability:	1 year from dispatch.
Database Link:	<a href="#">P36980</a>
Background:	Involved in complement regulation. The dimerized forms have avidity for tissue-bound complement fragments and efficiently compete with the physiological complement inhibitor CFH. Can associate with lipoproteins and may play a role in lipid metabolism.



[View online »](#)

**Product images:**

Immunohistochemistry of paraffin-embedded human liver tissue using TA386955 at dilution of 1:100



Western blot  
All lanes: CFHR2 antibody at 2 $\mu$ g/ml  
Lane 1: Hela whole cell lysate  
Lane 2: 293T whole cell lysate  
Secondary  
Goat polyclonal to rabbit IgG at 1/10000 dilution  
Predicted band size: 31, 28 kDa  
Observed band size: 36 kDa