

## Product datasheet for **TA386954**

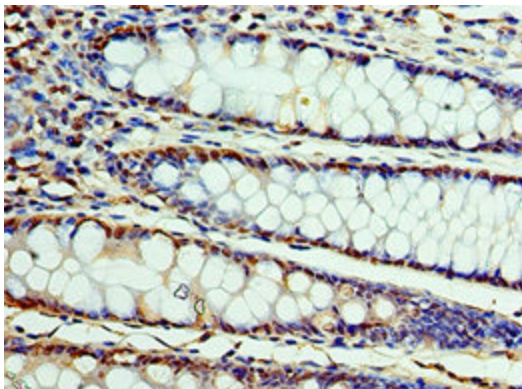
### CSTF2 Rabbit Polyclonal Antibody

#### Product data:

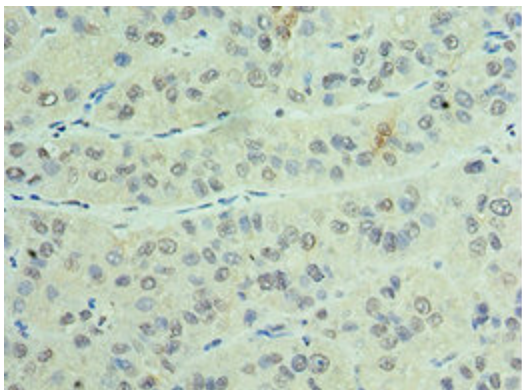
Product Type:	Primary Antibodies
Applications:	IHC, WB
Recommended Dilution:	Recommended dilution: WB:1:500-1:2000, IHC:1:20-1:200
Reactivity:	Human
Host:	Rabbit
Isotype:	IgG
Clonality:	Polyclonal
Immunogen:	Recombinant Human Cleavage stimulation factor subunit 2 protein (1-180AA)
Formulation:	PBS with 0.02% sodium azide, 50% glycerol, pH7.3.
Concentration:	lot specific
Purification:	Antigen Affinity Purified
Conjugation:	Unconjugated
Storage:	Upon receipt, store at -20°C or -80°C. Avoid repeated freeze.
Stability:	1 year from dispatch.
Database Link:	<a href="#">P33240</a>
Background:	One of the multiple factors required for polyadenylation and 3'-end cleavage of mammalian pre-mRNAs. This subunit is directly involved in the binding to pre-mRNAs (By similarity).



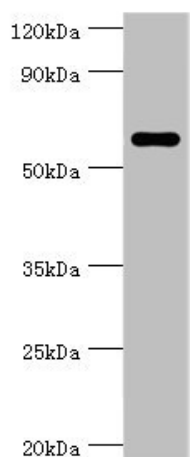
[View online »](#)

**Product images:**

Immunohistochemistry of paraffin-embedded human colon cancer using TA386954 at dilution of 1:100



Immunohistochemistry of paraffin-embedded human liver cancer using TA386954 at dilution of 1:100



Western blot

All lanes: CSTF2 antibody at 6 $\mu$ g/ml + Jurkat whole cell lysate

Secondary

Goat polyclonal to rabbit IgG at 1/10000 dilution

Predicted band size: 61, 60 kDa

Observed band size: 61 kDa