

## Product datasheet for **TA386952M**

### **RPL9 Rabbit Polyclonal Antibody**

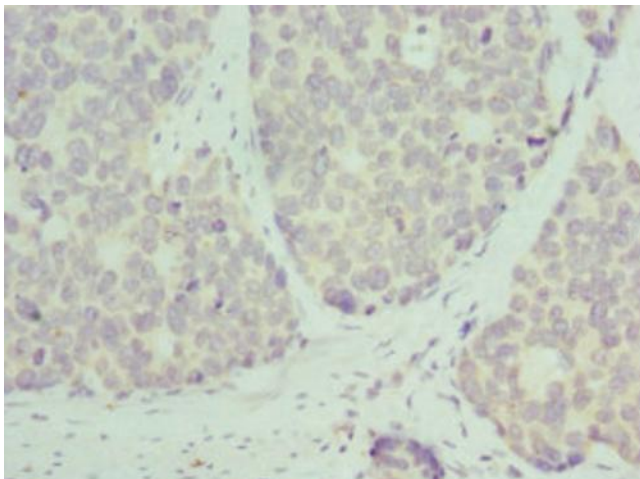
#### **Product data:**

|                       |  |
|-----------------------|--|
| Product Type:         | Primary Antibodies   |
| Applications:         | IHC, WB  |
| Recommended Dilution: | Recommended dilution: WB:1:1000-1:5000, IHC:1:20-1:200   |
| Reactivity:           | Human  |
| Host:                 | Rabbit   |
| Isotype:              | IgG  |
| Clonality:            | Polyclonal   |
| Immunogen:            | Recombinant Human 60S ribosomal protein L9 protein (1-192AA)   |
| Formulation:          | PBS with 0.02% sodium azide, 50% glycerol, pH7.3.  |
| Concentration:        | lot specific   |
| Purification:         | Antigen Affinity Purified  |
| Conjugation:          | Unconjugated   |
| Storage:              | Upon receipt, store at -20°C or -80°C. Avoid repeated freeze.  |
| Stability:            | 1 year from dispatch.  |
| Database Link:        | <a href="#">P32969</a>   |
| Background:           | cytoplasm, cytosol, cytosolic large ribosomal subunit, focal adhesion, membrane, nucleolus, nucleus, ribosome, RNA binding, structural constituent of ribosome |

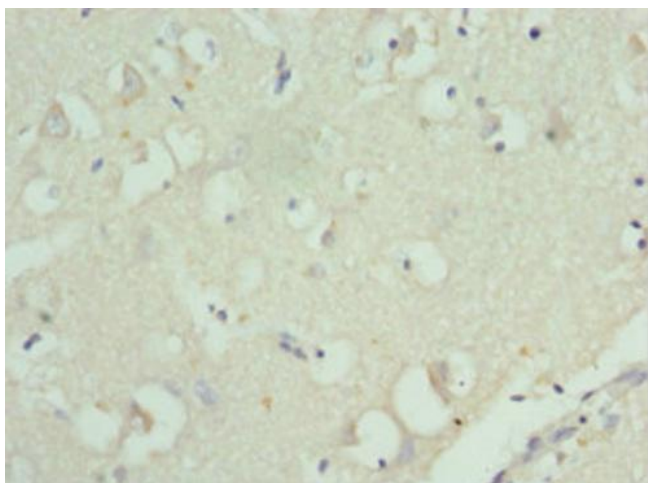


[View online »](#)

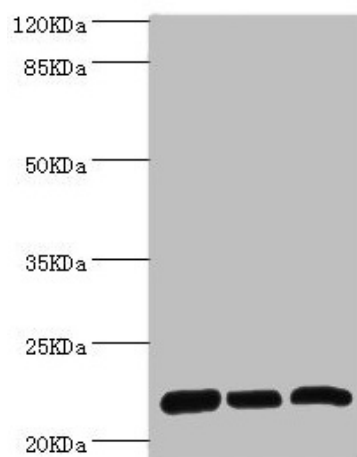
## Product images:



Immunohistochemistry of paraffin-embedded human gastric cancer using [TA386952] at dilution of 1:100



Immunohistochemistry of paraffin-embedded human brain tissue using [TA386952] at dilution of 1:100



Western blot

All lanes: RPL9 antibody at 0.61µg/ml

Lane 1: SY-5Y whole cell lysate

Lane 2: Hela whole cell lysate

Lane 3: HepG2 whole cell lysate

Secondary

Goat polyclonal to rabbit IgG at 1/10000 dilution

Predicted band size: 22 kDa

Observed band size: 22 kDa