

Product datasheet for **TA386952**

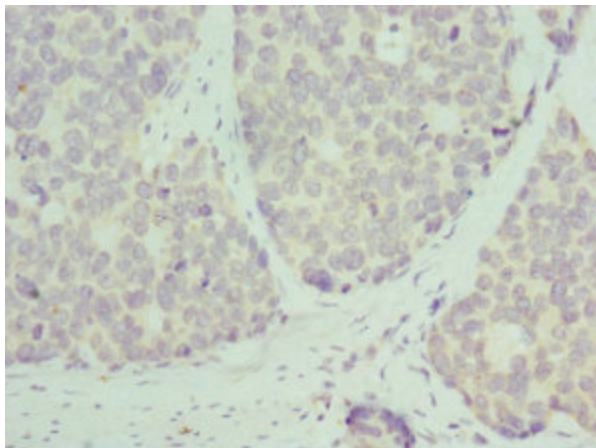
RPL9 Rabbit Polyclonal Antibody

Product data:

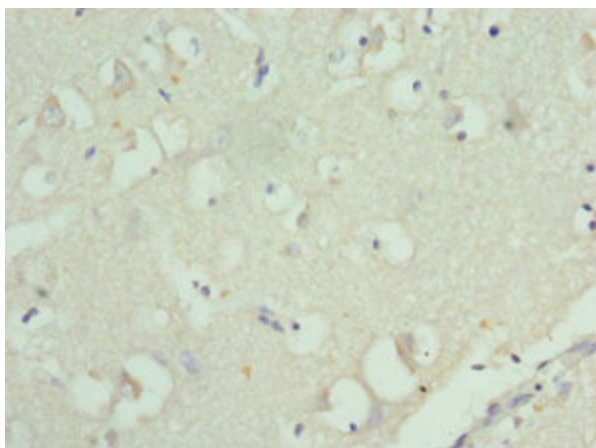
Product Type:	Primary Antibodies
Applications:	IHC, WB
Recommended Dilution:	Recommended dilution: WB:1:1000-1:5000, IHC:1:20-1:200
Reactivity:	Human
Host:	Rabbit
Isotype:	IgG
Clonality:	Polyclonal
Immunogen:	Recombinant Human 60S ribosomal protein L9 protein (1-192AA)
Formulation:	PBS with 0.02% sodium azide, 50% glycerol, pH7.3.
Concentration:	lot specific
Purification:	Antigen Affinity Purified
Conjugation:	Unconjugated
Storage:	Upon receipt, store at -20°C or -80°C. Avoid repeated freeze.
Stability:	1 year from dispatch.
Database Link:	P32969
Background:	cytoplasm, cytosol, cytosolic large ribosomal subunit, focal adhesion, membrane, nucleolus, nucleus, ribosome, RNA binding, structural constituent of ribosome



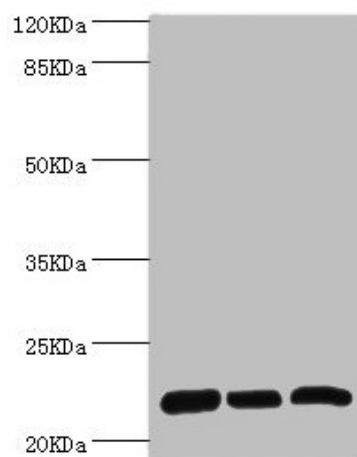
[View online »](#)

Product images:

Immunohistochemistry of paraffin-embedded human gastric cancer using TA386952 at dilution of 1:100



Immunohistochemistry of paraffin-embedded human brain tissue using TA386952 at dilution of 1:100



Western blot

All lanes: RPL9 antibody at 0.61 μ g/ml

Lane 1: SY-5Y whole cell lysate

Lane 2: Hela whole cell lysate

Lane 3: HepG2 whole cell lysate

Secondary

Goat polyclonal to rabbit IgG at 1/10000 dilution

Predicted band size: 22 kDa

Observed band size: 22 kDa