

Product datasheet for **TA386951**

SLC6A6 Rabbit Polyclonal Antibody

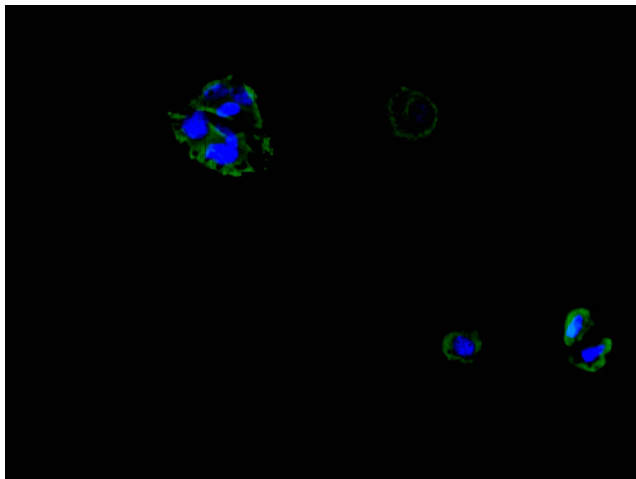
Product data:

Product Type:	Primary Antibodies
Applications:	IF, WB
Recommended Dilution:	Recommended dilution: WB:1:500-1:2000, IF:1:50-1:200
Reactivity:	Human
Host:	Rabbit
Isotype:	IgG
Clonality:	Polyclonal
Immunogen:	Recombinant Human Sodium- and chloride-dependent taurine transporter protein (1-49AA)
Formulation:	Preservative: 0.03% Proclin 300 Constituents: 50% Glycerol, 0.01M PBS, PH 7.4
Concentration:	lot specific
Purification:	Antigen Affinity Purified
Conjugation:	Unconjugated
Storage:	Upon receipt, store at -20°C or -80°C. Avoid repeated freeze.
Stability:	1 year from dispatch.
Database Link:	P31641
Background:	Sodium-dependent taurine and beta-alanine transporter. Chloride ions are necessary for optimal uptake.

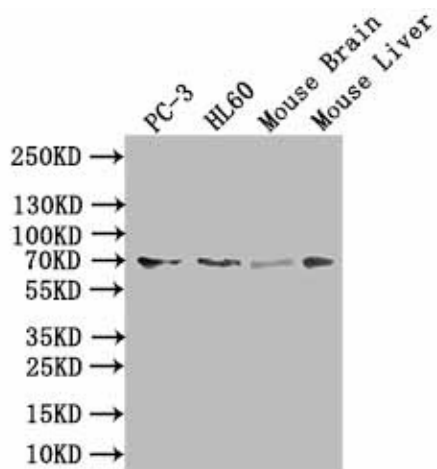


[View online »](#)

Product images:



Immunofluorescent analysis of HeLa cells using TA386951 at dilution of 1:100 and Alexa Fluor 488-conjugated AffiniPure Goat Anti-Rabbit IgG(H+L)



Western blot
 All lanes: SLC6A6 antibody at 0.5µg/ml + Human placenta tissue
 Secondary
 Goat polyclonal to rabbit IgG at 1/10000 dilution
 Predicted band size: 70, 23 kDa
 Observed band size: 70 kDa