

## Product datasheet for **TA386950**

### TPP2 Rabbit Polyclonal Antibody

#### Product data:

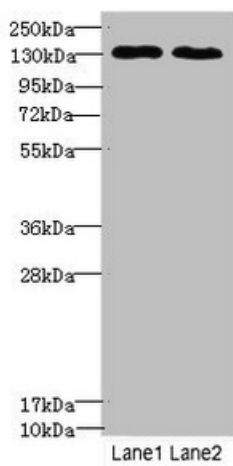
Product Type:	Primary Antibodies
Applications:	IHC, WB
Recommended Dilution:	Recommended dilution: WB:1:1000-1:5000, IHC:1:20-1:200
Reactivity:	Human
Host:	Rabbit
Isotype:	IgG
Clonality:	Polyclonal
Immunogen:	Recombinant Human Tripeptidyl-peptidase 2 protein (1-300AA)
Formulation:	PBS with 0.02% sodium azide, 50% glycerol, pH7.3.
Concentration:	lot specific
Purification:	Antigen Affinity Purified
Conjugation:	Unconjugated
Storage:	Upon receipt, store at -20°C or -80°C. Avoid repeated freeze.
Stability:	1 year from dispatch.
Database Link:	<a href="#">P29144</a>
Background:	Component of the proteolytic cascade acting downstream of the 26S proteasome in the ubiquitin-proteasome pathway. May be able to complement the 26S proteasome function to some extent under conditions in which the latter is inhibited. Stimulates adipogenesis (By similarity).



[View online »](#)

**Product images:**

Immunohistochemistry of paraffin-embedded human testis tissue using TA386950 at dilution of 1:100



Western blot  
All lanes: TPP2antibody at 3.42 $\mu$ g/ml  
Lane 1: HeLa whole cell lysate  
Lane 2: HepG2 whole cell lysate  
Secondary  
Goat polyclonal to rabbit IgG at 1/10000 dilution  
Predicted band size: 138 kDa  
Observed band size: 138 kDa