

## Product datasheet for **TA386948M**

### MGAT1 Rabbit Polyclonal Antibody

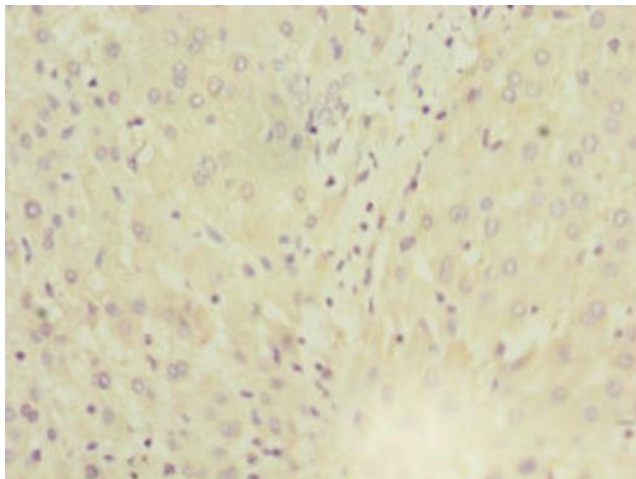
#### Product data:

Product Type:	Primary Antibodies
Applications:	IHC, WB
Recommended Dilution:	Recommended dilution: WB:1:1000-1:5000, IHC:1:20-1:200
Reactivity:	Human
Host:	Rabbit
Isotype:	IgG
Clonality:	Polyclonal
Immunogen:	Recombinant Human Alpha-1,3-mannosyl-glycoprotein 2-beta-N-acetylglucosaminyltransferase protein (156-445AA)
Formulation:	PBS with 0.02% sodium azide, 50% glycerol, pH7.3.
Concentration:	lot specific
Purification:	Antigen Affinity Purified
Conjugation:	Unconjugated
Storage:	Upon receipt, store at -20°C or -80°C. Avoid repeated freeze.
Stability:	1 year from dispatch.
Database Link:	<a href="#">P26572</a>
Background:	Initiates complex N-linked carbohydrate formation. Essential for the conversion of high-mannose to hybrid and complex N-glycans.

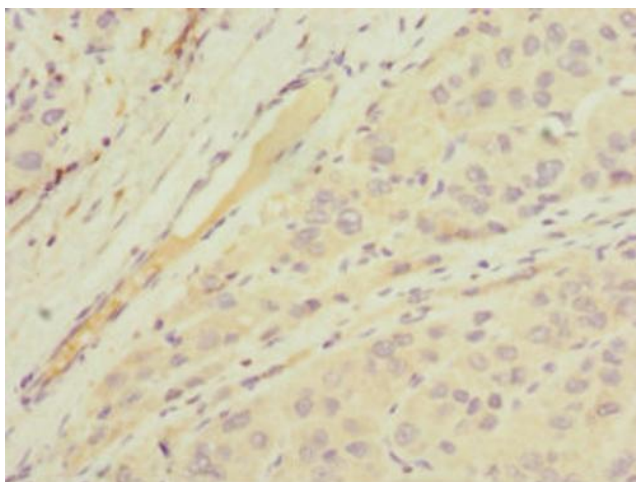


[View online »](#)

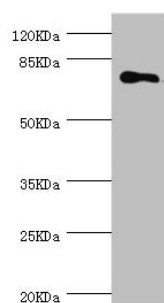
## Product images:



Immunohistochemistry of paraffin-embedded human liver tissue using [TA386948] at dilution of 1:100



Immunohistochemistry of paraffin-embedded human liver cancer using [TA386948] at dilution of 1:100



Western blot

All lanes: MGAT1 antibody at 1.18µg/ml + 293T whole cell lysate

Secondary

Goat polyclonal to rabbit IgG at 1/10000 dilution

Predicted band size: 75 kDa

Observed band size: 75 kDa