

Product datasheet for **TA386941M**

HLA-C Rabbit Polyclonal Antibody

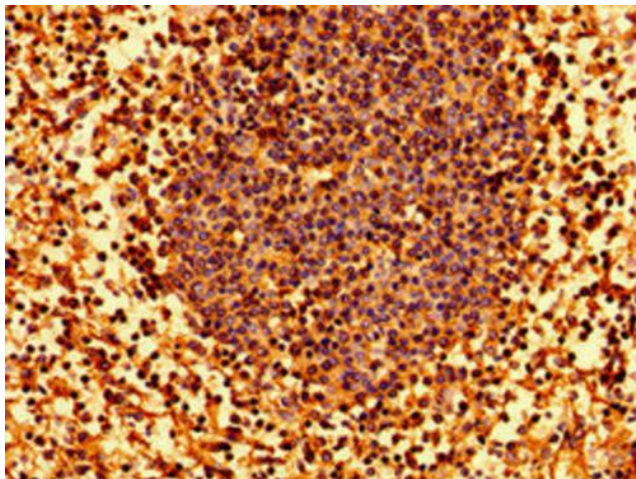
Product data:

Product Type:	Primary Antibodies
Applications:	IF, IHC, WB
Recommended Dilution:	Recommended dilution: WB:1:500-1:5000, IHC:1:20-1:200, IF:1:50-1:200
Reactivity:	Mouse, Human
Host:	Rabbit
Isotype:	IgG
Clonality:	Polyclonal
Immunogen:	Recombinant Human HLA class I histocompatibility antigen, Cw-7 alpha chain protein (62-306AA)
Formulation:	Preservative: 0.03% Proclin 300 Constituents: 50% Glycerol, 0.01M PBS, pH 7.4
Concentration:	lot specific
Purification:	>95%, Protein G purified
Conjugation:	Unconjugated
Storage:	Upon receipt, store at -20°C or -80°C. Avoid repeated freeze.
Stability:	1 year from dispatch.
Database Link:	P10321
Background:	Involved in the presentation of foreign antigens to the immune system.

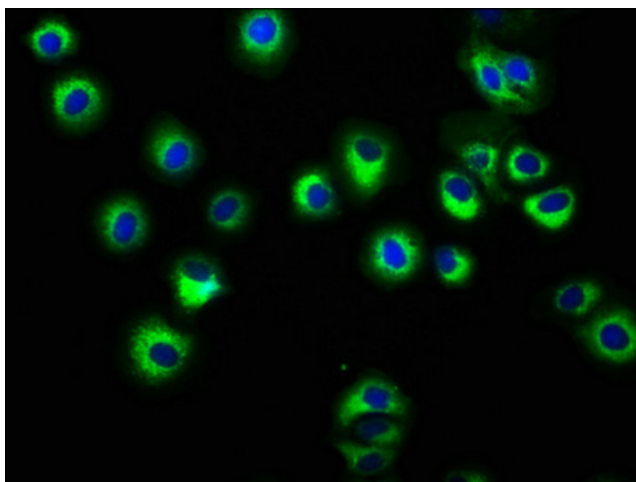


[View online »](#)

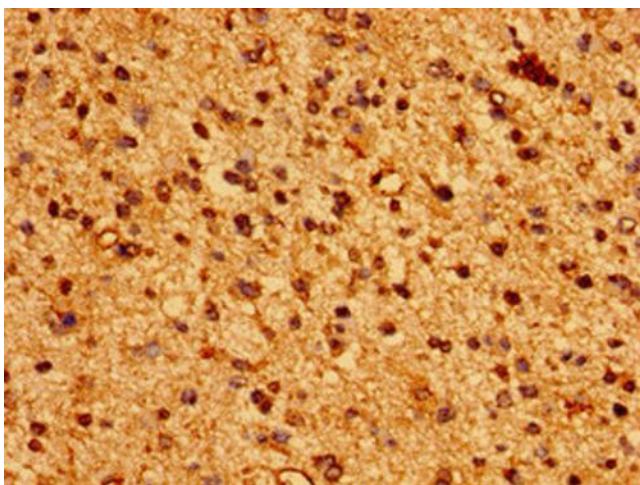
Product images:



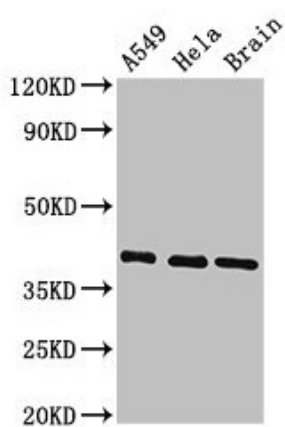
Immunohistochemistry of paraffin-embedded human lymph node tissue using [TA386941] at dilution of 1:100



Immunofluorescence staining of HepG2 cells with [TA386941] at 1:166, counter-stained with DAPI. The cells were fixed in 4% formaldehyde, permeabilized using 0.2% Triton X-100 and blocked in 10% normal Goat Serum. The cells were then incubated with the antibody overnight at 4°C. The secondary antibody was Alexa Fluor 488-conjugated AffiniPure Goat Anti-Rabbit IgG(H+L).



Immunohistochemistry of paraffin-embedded human glioma using [TA386941] at dilution of 1:100



Western Blot
Positive WB detected in: A549 whole cell lysate, HeLa whole cell lysate, Mouse brain tissue
All lanes: HLA-C antibody at 3.4µg/ml
Secondary
Goat polyclonal to rabbit IgG at 1/50000 dilution
Predicted band size: 41 kDa
Observed band size: 41 kDa