

Product datasheet for **TA386939M**

PYGL Rabbit Polyclonal Antibody

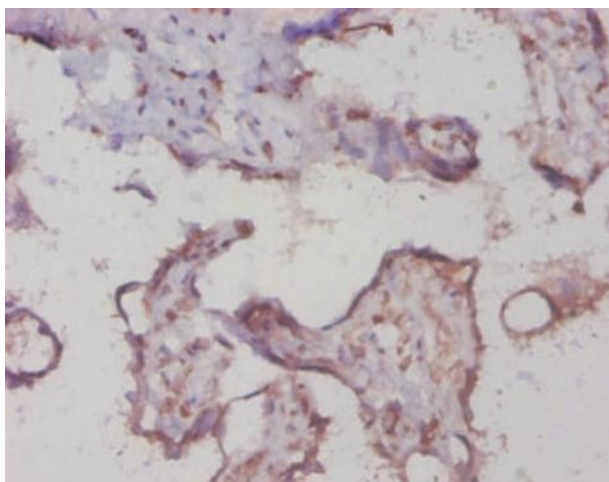
Product data:

Product Type:	Primary Antibodies
Applications:	IHC, WB
Recommended Dilution:	Recommended dilution: WB:1:1000-1:5000, IHC:1:20-1:200
Reactivity:	Human
Host:	Rabbit
Isotype:	IgG
Clonality:	Polyclonal
Immunogen:	Recombinant Human Glycogen phosphorylase, liver form protein (2-846AA)
Formulation:	Preservative: 0.03% Proclin 300 Constituents: 50% Glycerol, 0.01M PBS, PH 7.4
Concentration:	lot specific
Purification:	>95%, Protein G purified
Conjugation:	Unconjugated
Storage:	Upon receipt, store at -20°C or -80°C. Avoid repeated freeze.
Stability:	1 year from dispatch.
Database Link:	P06737
Background:	Phosphorylase is an important allosteric enzyme in carbohydrate metabolism. Enzymes from different sources differ in their regulatory mechanisms and in their natural substrates. However, all known phosphorylases share catalytic and structural properties.

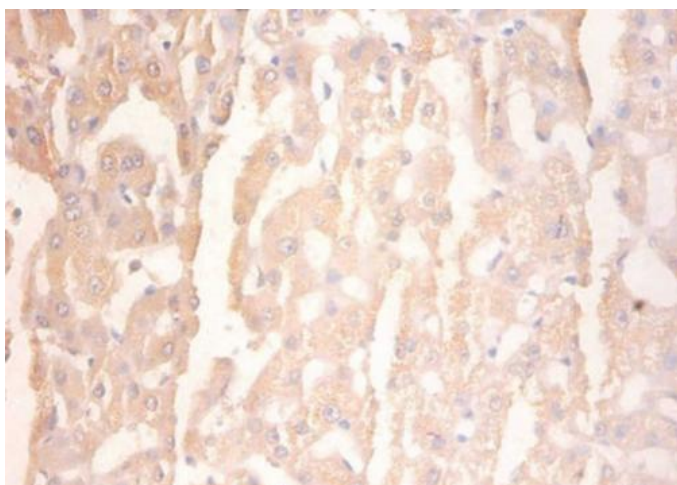


[View online »](#)

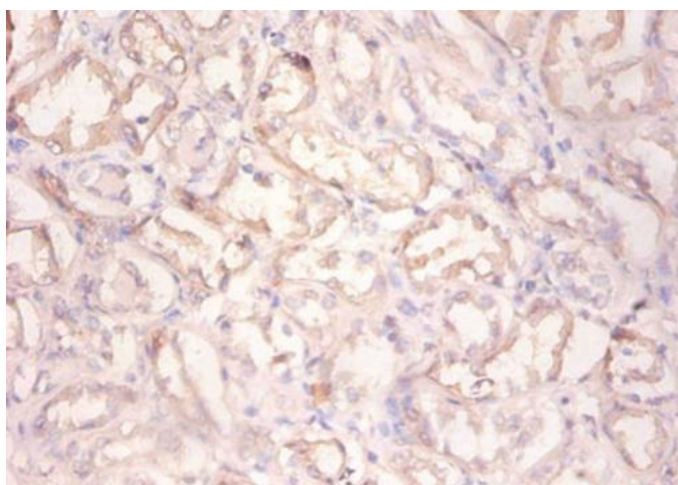
Product images:



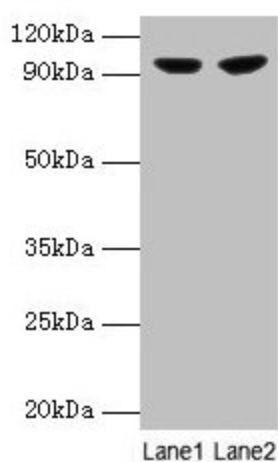
Immunohistochemistry of paraffin-embedded human placenta tissue using [TA386939] at dilution of 1:20



Immunohistochemistry of paraffin-embedded human liver tissue using [TA386939] at dilution of 1:100



Immunohistochemistry of paraffin-embedded human kidney tissue using [TA386939] at dilution of 1:100



Western blot
All lanes: PYGL antibody at 2µg/ml
Lane 1: 293T whole cell lysate
Lane 2: HepG2 whole cell lysate
Secondary
Goat polyclonal to rabbit IgG at 1/10000 dilution
Predicted band size: 98, 94 kDa
Observed band size: 98 kDa