

## Product datasheet for **TA386939**

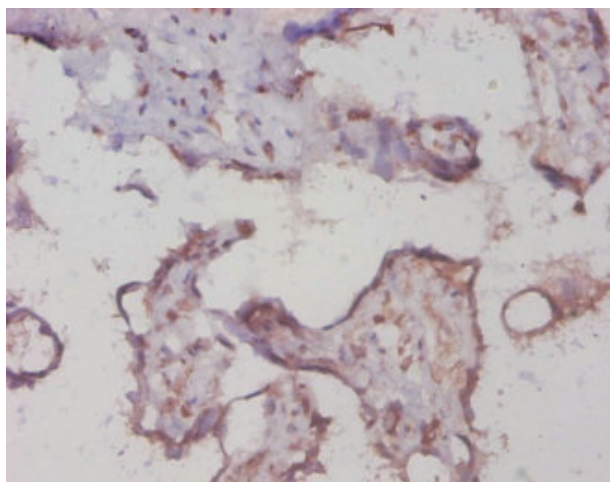
### **PYGL Rabbit Polyclonal Antibody**

#### **Product data:**

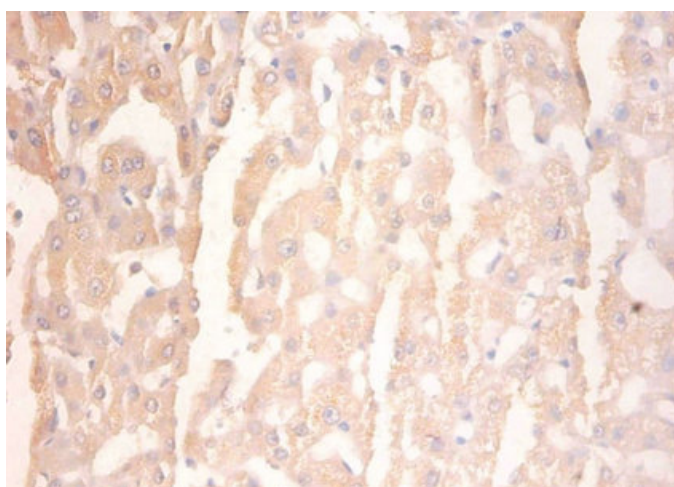
<b>Product Type:</b>	Primary Antibodies
<b>Applications:</b>	IHC, WB
<b>Recommended Dilution:</b>	Recommended dilution: WB:1:1000-1:5000, IHC:1:20-1:200
<b>Reactivity:</b>	Human
<b>Host:</b>	Rabbit
<b>Isotype:</b>	IgG
<b>Clonality:</b>	Polyclonal
<b>Immunogen:</b>	Recombinant Human Glycogen phosphorylase, liver form protein (2-846AA)
<b>Formulation:</b>	Preservative: 0.03% Proclin 300 Constituents: 50% Glycerol, 0.01M PBS, PH 7.4
<b>Concentration:</b>	lot specific
<b>Purification:</b>	>95%, Protein G purified
<b>Conjugation:</b>	Unconjugated
<b>Storage:</b>	Upon receipt, store at -20°C or -80°C. Avoid repeated freeze.
<b>Stability:</b>	1 year from dispatch.
<b>Database Link:</b>	<a href="#">P06737</a>
<b>Background:</b>	Phosphorylase is an important allosteric enzyme in carbohydrate metabolism. Enzymes from different sources differ in their regulatory mechanisms and in their natural substrates. However, all known phosphorylases share catalytic and structural properties.



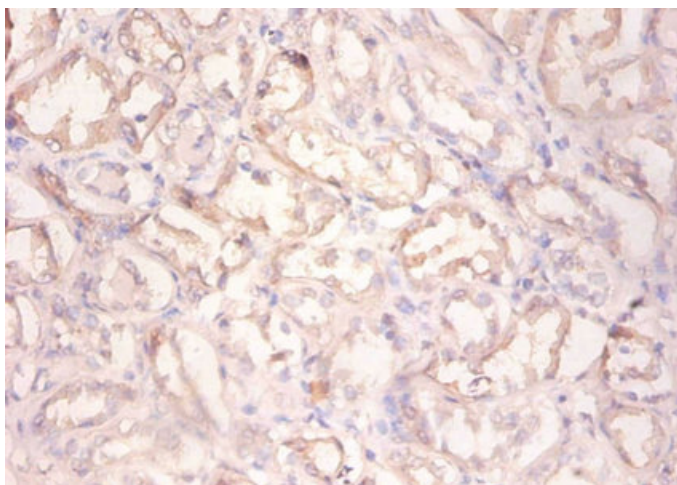
[View online »](#)

**Product images:**

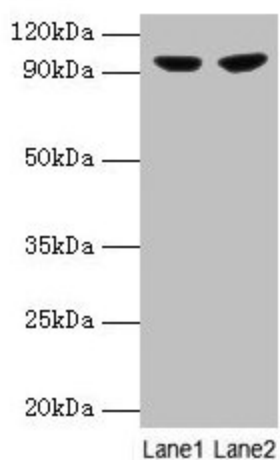
Immunohistochemistry of paraffin-embedded human placenta tissue using TA386939 at dilution of 1:20



Immunohistochemistry of paraffin-embedded human liver tissue using TA386939 at dilution of 1:100



Immunohistochemistry of paraffin-embedded human kidney tissue using TA386939 at dilution of 1:100



Western blot  
All lanes: PYGL antibody at 2 $\mu$ g/ml  
Lane 1: 293T whole cell lysate  
Lane 2: HepG2 whole cell lysate  
Secondary  
Goat polyclonal to rabbit IgG at 1/10000 dilution  
Predicted band size: 98, 94 kDa  
Observed band size: 98 kDa