

## Product datasheet for **TA386934M**

### PGLS Rabbit Polyclonal Antibody

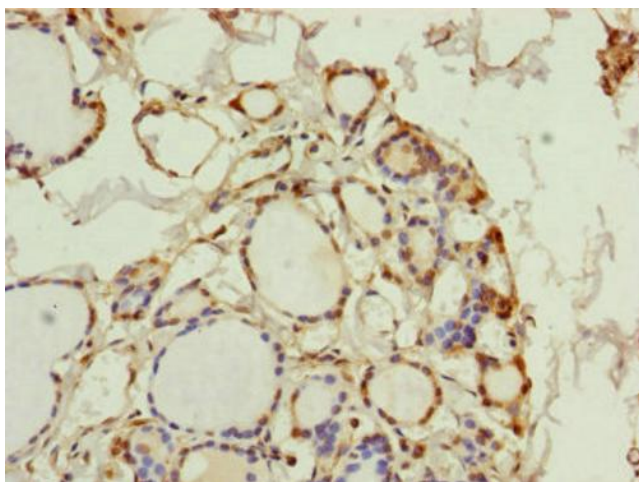
#### Product data:

Product Type:	Primary Antibodies
Applications:	IHC, IP, WB
Recommended Dilution:	Recommended dilution: WB:1:1000-1:5000, IHC:1:20-1:200, IP:1:200-1:2000
Reactivity:	Mouse, Human
Host:	Rabbit
Isotype:	IgG
Clonality:	Polyclonal
Immunogen:	Recombinant Human 6-phosphogluconolactonase protein (1-258AA)
Formulation:	PBS with 0.02% sodium azide, 50% glycerol, pH7.3.
Concentration:	lot specific
Purification:	Antigen Affinity Purified
Conjugation:	Unconjugated
Storage:	Upon receipt, store at -20°C or -80°C. Avoid repeated freeze.
Stability:	1 year from dispatch.
Database Link:	<a href="#">O95336</a>
Background:	Hydrolysis of 6-phosphogluconolactone to 6-phosphogluconate.

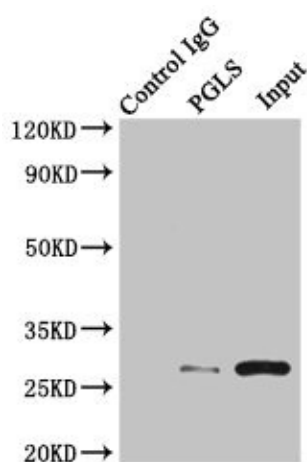


[View online »](#)

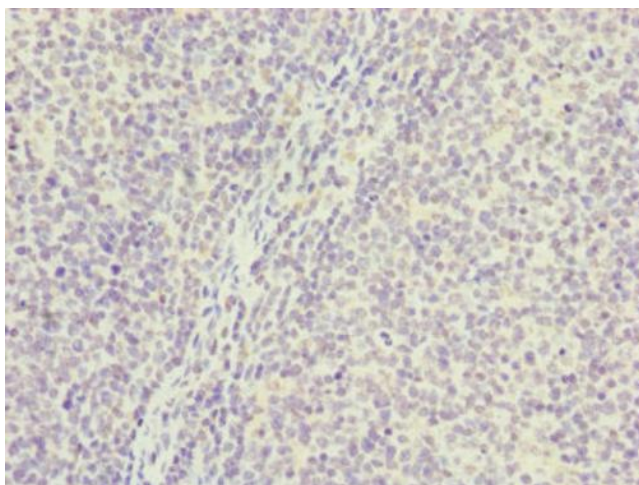
## Product images:



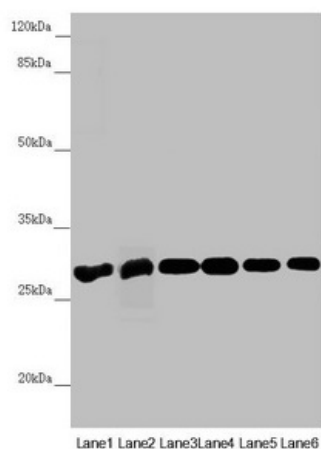
Immunohistochemistry of paraffin-embedded human thyroid tissue using [TA386934] at dilution of 1:100



Immunoprecipitating PGLS in U251 whole cell lysate  
 Lane 1: Rabbit control IgG instead of (1 $\mu$ g) instead of [TA386934] in U251 whole cell lysate. For western blotting, a HRP-conjugated light chain specific antibody was used as the Secondary antibody (1/50000)  
 Lane 2: [TA386934] (4 $\mu$ g) + U251 whole cell lysate (500 $\mu$ g)  
 Lane 3: U251 whole cell lysate (20 $\mu$ g)



Immunohistochemistry of paraffin-embedded human tonsil tissue using [TA386934] at dilution of 1:100



**Western blot**

All lanes: PGLS antibody at 3.94µg/ml

Lane 1: Mouse liver tissue

Lane 2: Mouse brain tissue

Lane 3: U251 whole cell lysate

Lane 4: THP-1 whole cell lysate

Lane 5: HepG2 whole cell lysate

Lane 6: Hela whole cell lysate

**Secondary**

Goat polyclonal to rabbit IgG at 1/10000 dilution

Predicted band size: 28 kDa

Observed band size: 28 kDa