

Product datasheet for **TA386933M**

PGLS Rabbit Polyclonal Antibody

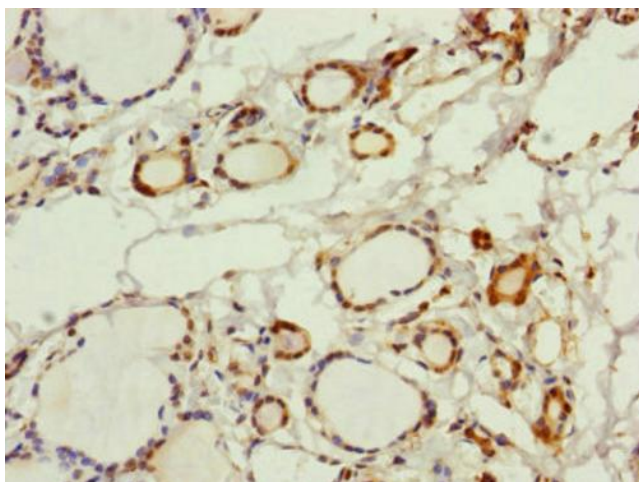
Product data:

| | |
|-----------------------|---|
| Product Type: | Primary Antibodies |
| Applications: | IHC, IP, WB |
| Recommended Dilution: | Recommended dilution: WB:1:1000-1:5000, IHC:1:20-1:200, IP:1:200-1:2000 |
| Reactivity: | Mouse, Human |
| Host: | Rabbit |
| Isotype: | IgG |
| Clonality: | Polyclonal |
| Immunogen: | Recombinant Human 6-phosphogluconolactonase protein (1-258AA) |
| Formulation: | PBS with 0.02% sodium azide, 50% glycerol, pH7.3. |
| Concentration: | lot specific |
| Purification: | Antigen Affinity Purified |
| Conjugation: | Unconjugated |
| Storage: | Upon receipt, store at -20°C or -80°C. Avoid repeated freeze. |
| Stability: | 1 year from dispatch. |
| Database Link: | O95336 |
| Background: | Hydrolysis of 6-phosphogluconolactone to 6-phosphogluconate. |

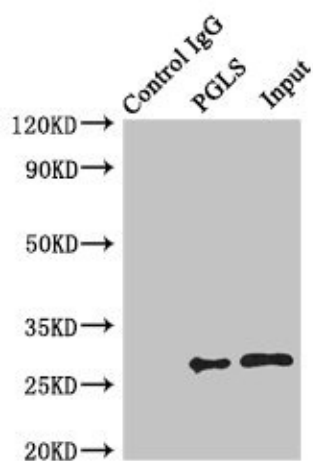


[View online »](#)

Product images:



Immunohistochemistry of paraffin-embedded human thyroid tissue using [TA386933] at dilution of 1:100

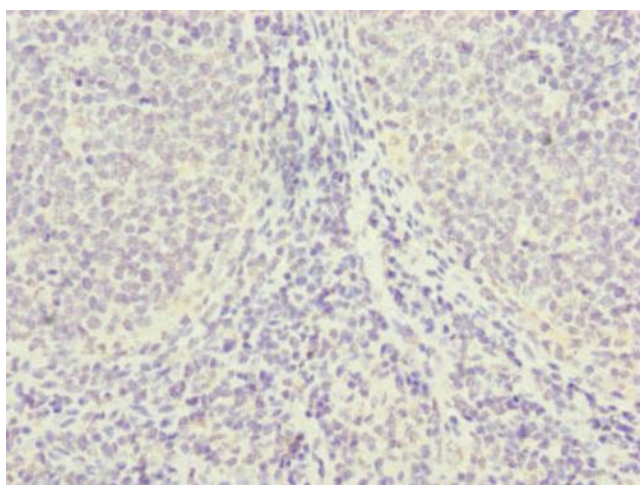


Immunoprecipitating PGLS in U251 whole cell lysate

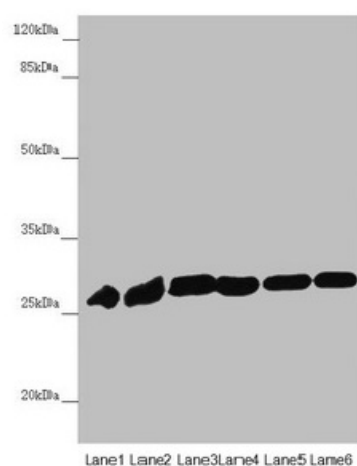
Lane 1: Rabbit control IgG instead of (1 μ g) instead of [TA386933] in U251 whole cell lysate. For western blotting, a HRP-conjugated light chain specific antibody was used as the Secondary antibody (1/50000)

Lane 2: [TA386933] (4 μ g) + U251 whole cell lysate (500 μ g)

Lane 3: U251 whole cell lysate (20 μ g)



Immunohistochemistry of paraffin-embedded human tonsil tissue using [TA386933] at dilution of 1:100



Western blot

All lanes: PGLS antibody at 4.19µg/ml

Lane 1: Mouse liver tissue

Lane 2: Mouse brain tissue

Lane 3: U251 whole cell lysate

Lane 4: THP-1 whole cell lysate

Lane 5: HepG2 whole cell lysate

Lane 6: Hela whole cell lysate

Secondary

Goat polyclonal to rabbit IgG at 1/10000 dilution

Predicted band size: 28 kDa

Observed band size: 28 kDa