

Product datasheet for **TA386932M**

LYPD3 Rabbit Polyclonal Antibody

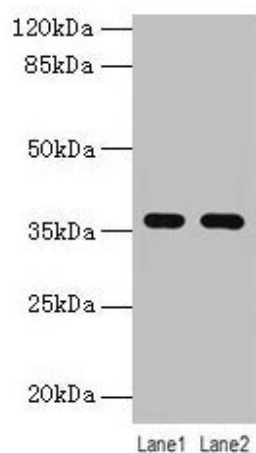
Product data:

Product Type:	Primary Antibodies
Applications:	WB
Recommended Dilution:	Recommended dilution: WB:1:1000-1:5000
Reactivity:	Mouse, Human
Host:	Rabbit
Isotype:	IgG
Clonality:	Polyclonal
Immunogen:	Recombinant Human Ly6/PLAUR domain-containing protein 3 protein (31-326AA)
Formulation:	Preservative: 0.03% Proclin 300 Constituents: 50% Glycerol, 0.01M PBS, PH 7.4
Concentration:	lot specific
Purification:	>95%, Protein G purified
Conjugation:	Unconjugated
Storage:	Upon receipt, store at -20°C or -80°C. Avoid repeated freeze.
Stability:	1 year from dispatch.
Database Link:	Q95274
Background:	Supports cell migration. May be involved in urothelial cell-matrix interactions. May be involved in tumor progression.



[View online »](#)

Product images:



Western blot

All lanes: LYPD3 antibody at 4 μ g/ml

Lane 1: MCF-7 whole cell lysate

Lane 2: Mouse stomach tissue

Secondary

Goat polyclonal to rabbit IgG at 1/10000 dilution

Predicted band size: 36 kDa

Observed band size: 36 kDa