

Product datasheet for **TA386930**

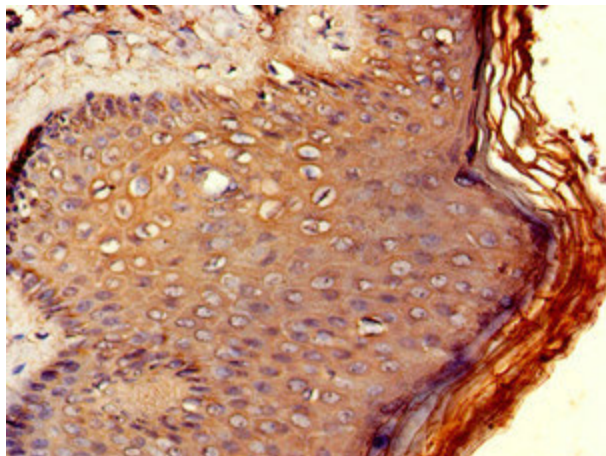
RCBTB2 Rabbit Polyclonal Antibody

Product data:

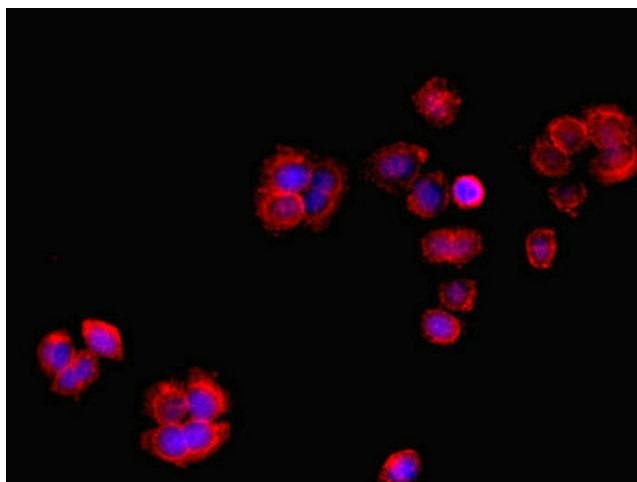
Product Type:	Primary Antibodies
Applications:	IF, IHC, WB
Recommended Dilution:	Recommended dilution: WB:1:500-1:5000, IHC:1:20-1:200, IF:1:50-1:200
Reactivity:	Rat, Human
Host:	Rabbit
Isotype:	IgG
Clonality:	Polyclonal
Immunogen:	Recombinant Human RCC1 and BTB domain-containing protein 2 protein (1-200AA)
Formulation:	Preservative: 0.03% Proclin 300 Constituents: 50% Glycerol, 0.01M PBS, PH 7.4
Concentration:	lot specific
Purification:	>95%, Protein G purified
Conjugation:	Unconjugated
Storage:	Upon receipt, store at -20°C or -80°C. Avoid repeated freeze.
Stability:	1 year from dispatch.
Database Link:	O95199
Background:	Ran guanyl-nucleotide exchange factor activity, positive regulation of GTPase activity



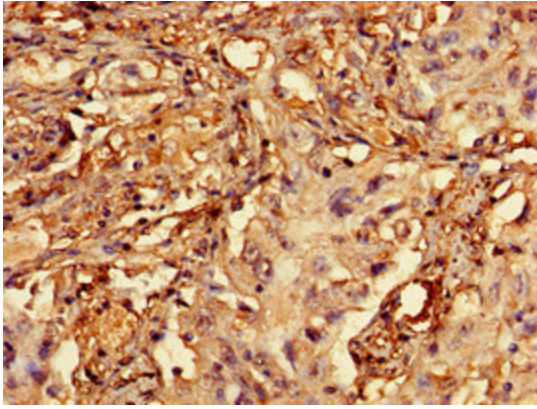
[View online »](#)

Product images:

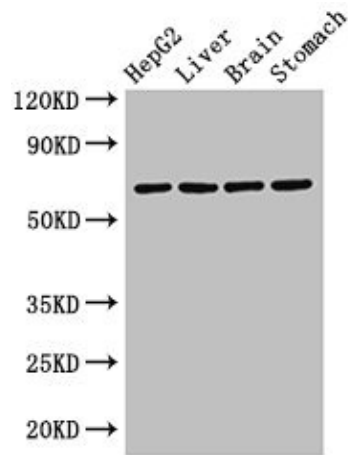
Immunohistochemistry of paraffin-embedded human skin tissue using TA386930 at dilution of 1:100



Immunofluorescent analysis of PC-3 cells using TA386930 at dilution of 1:100 and Cy3-conjugated Goat Anti-Rabbit IgG



Immunohistochemistry of paraffin-embedded human lung cancer using TA386930 at dilution of 1:100



Western Blot
 Positive WB detected in: HepG2 whole cell lysate, Rat liver tissue, Rat brain tissue, Rat stomach tissue
 All lanes: RCBTB2 antibody at 3.2µg/ml
 Secondary
 Goat polyclonal to rabbit IgG at 1/50000 dilution
 Predicted band size: 61, 58 kDa
 Observed band size: 61 kDa