

## Product datasheet for **TA386928**

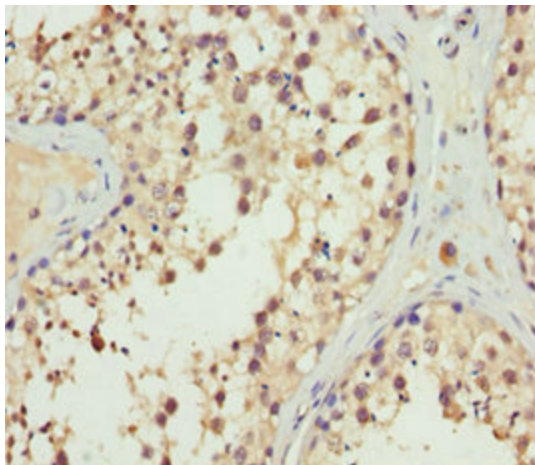
### ERLIN2 Rabbit Polyclonal Antibody

#### Product data:

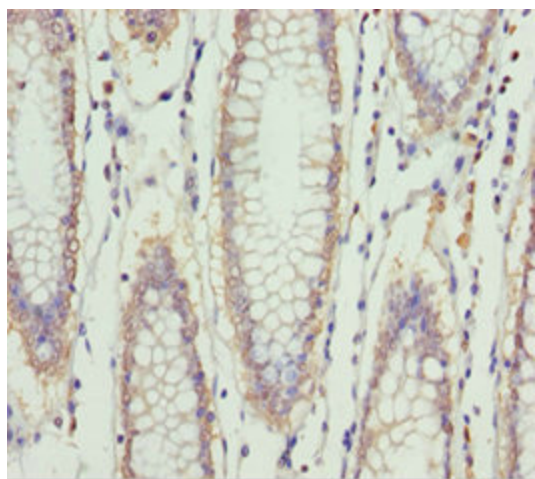
Product Type:	Primary Antibodies
Applications:	IHC, WB
Recommended Dilution:	Recommended dilution: WB:1:1000-1:5000, IHC:1:20-1:200
Reactivity:	Human
Host:	Rabbit
Isotype:	IgG
Clonality:	Polyclonal
Immunogen:	Recombinant Human Erlin-2 protein (212-339AA)
Formulation:	PBS with 0.02% sodium azide, 50% glycerol, pH7.3.
Concentration:	lot specific
Purification:	Antigen Affinity Purified
Conjugation:	Unconjugated
Storage:	Upon receipt, store at -20°C or -80°C. Avoid repeated freeze.
Stability:	1 year from dispatch.
Database Link:	<a href="#">O94905</a>
Background:	Component of the ERLIN1/ERLIN2 complex which mediates the endoplasmic reticulum-associated degradation (ERAD) of inositol 1,4,5-trisphosphate receptors (IP3Rs) such as ITPR1 (PubMed:19240031, PubMed:17502376). Promotes sterol-accelerated ERAD of HMGCR probably implicating an AMFR/gp78-containing ubiquitin ligase complex (PubMed:21343306). Involved in regulation of cellular cholesterol homeostasis by regulation the SREBP signaling pathway. May promote ER retention of the SCAP-SREBF complex (PubMed:24217618).



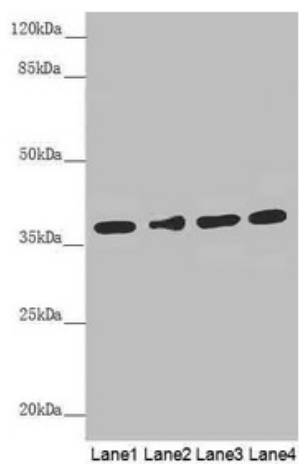
[View online »](#)

**Product images:**

Immunohistochemistry of paraffin-embedded human testis tissue using TA386928 at dilution of 1:100



Immunohistochemistry of paraffin-embedded human colon cancer using TA386928 at dilution of 1:100

**Western blot**

All lanes: ERLIN2 antibody at 3.1  $\mu$ g/ml

Lane 1: 293T whole cell lysate

Lane 2: HepG2 whole cell lysate

Lane 3: U251 whole cell lysate

Lane 4: HeLa whole cell lysate

**Secondary**

Goat polyclonal to rabbit IgG at 1/10000 dilution

Predicted band size: 38, 17, 23 kDa

Observed band size: 38 kDa