

## Product datasheet for **TA386927M**

### **RHOBTB1 Rabbit Polyclonal Antibody**

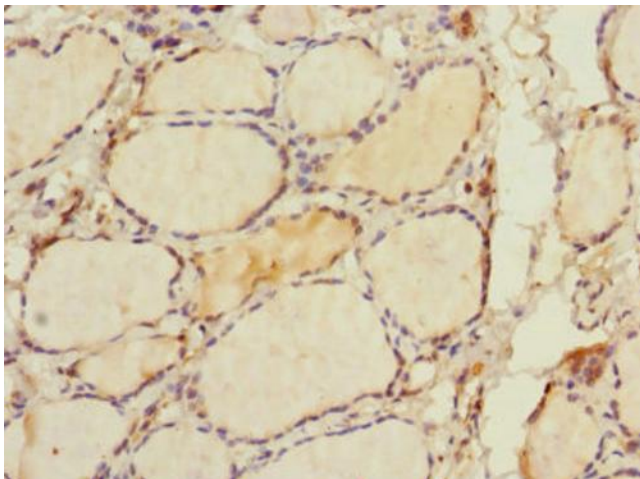
#### **Product data:**

Product Type:	Primary Antibodies
Applications:	IHC, WB
Recommended Dilution:	Recommended dilution: WB:1:1000-1:5000, IHC:1:20-1:200
Reactivity:	Human
Host:	Rabbit
Isotype:	IgG
Clonality:	Polyclonal
Immunogen:	Recombinant Human Rho-related BTB domain-containing protein 1 protein (240-400AA)
Formulation:	PBS with 0.02% sodium azide, 50% glycerol, pH7.3.
Concentration:	lot specific
Purification:	Antigen Affinity Purified
Conjugation:	Unconjugated
Storage:	Upon receipt, store at -20°C or -80°C. Avoid repeated freeze.
Stability:	1 year from dispatch.
Database Link:	<a href="#">O94844</a>
Background:	cytosol, plasma membrane, regulation of small GTPase mediated signal transduction

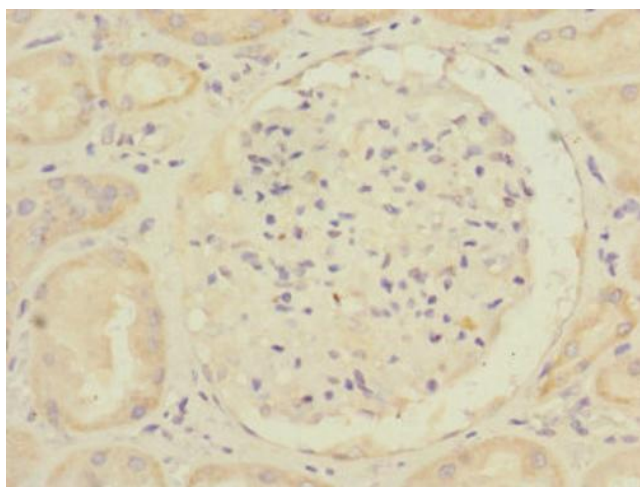


[View online »](#)

**Product images:**



Immunohistochemistry of paraffin-embedded human thyroid tissue using [TA386927] at dilution of 1:100



Immunohistochemistry of paraffin-embedded human kidney tissue using [TA386927] at dilution of 1:100



Western blot

All lanes: RHOBTB1 antibody IgG at 3.17 $\mu$ g/ml + 293T whole cell lysate

Secondary

Goat polyclonal to rabbit IgG at 1/10000 dilution

Predicted band size: 79 kDa

Observed band size: 79 kDa