

Product datasheet for **TA386922M**

SLC25A12 Rabbit Polyclonal Antibody

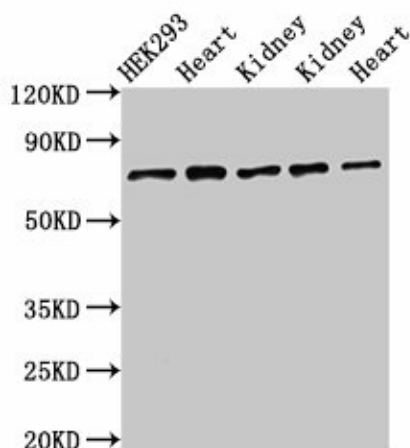
Product data:

Product Type:	Primary Antibodies
Applications:	IHC, WB
Recommended Dilution:	Recommended dilution: WB:1:500-1:5000, IHC:1:20-1:200
Reactivity:	Rat, Mouse, Human
Host:	Rabbit
Isotype:	IgG
Clonality:	Polyclonal
Immunogen:	Recombinant Human Calcium-binding mitochondrial carrier protein Aralar1 protein (202-317AA)
Formulation:	Preservative: 0.03% Proclin 300 Constituents: 50% Glycerol, 0.01M PBS, pH 7.4
Concentration:	lot specific
Purification:	>95%, Protein G purified
Conjugation:	Unconjugated
Storage:	Upon receipt, store at -20°C or -80°C. Avoid repeated freeze.
Stability:	1 year from dispatch.
Database Link:	<u>O75746</u>
Background:	Catalyzes the calcium-dependent exchange of cytoplasmic glutamate with mitochondrial aspartate across the mitochondrial inner membrane. May have a function in the urea cycle.



[View online »](#)

Product images:



Western Blot

Positive WB detected in: HEK293 whole cell lysate, Rat heart tissue, Rat kidney tissue, Mouse kidney tissue, Mouse heart tissue

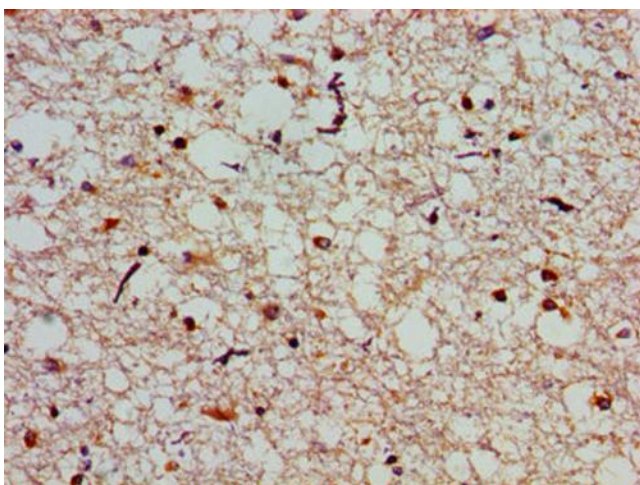
All lanes: SLC25A12 antibody at 3µg/ml

Secondary

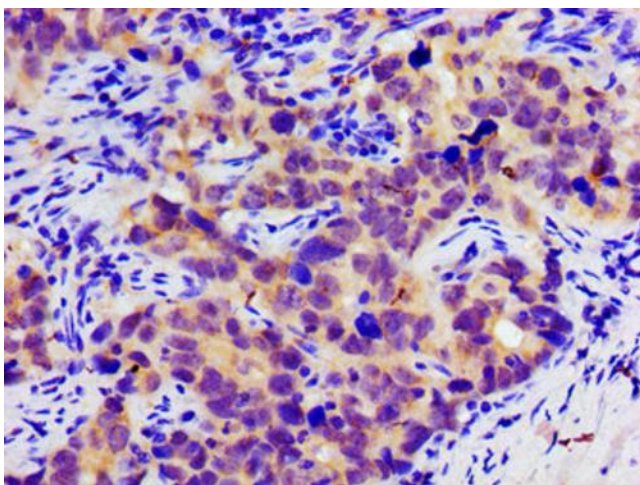
Goat polyclonal to rabbit IgG at 1/50000 dilution

Predicted band size: 75, 63 kDa

Observed band size: 75 kDa



Immunohistochemistry of paraffin-embedded human brain tissue using [TA386922] at dilution of 1:100



Immunohistochemistry of paraffin-embedded human pancreatic cancer using [TA386922] at dilution of 1:100