

Product datasheet for **TA386916M**

P4HA2 Rabbit Polyclonal Antibody

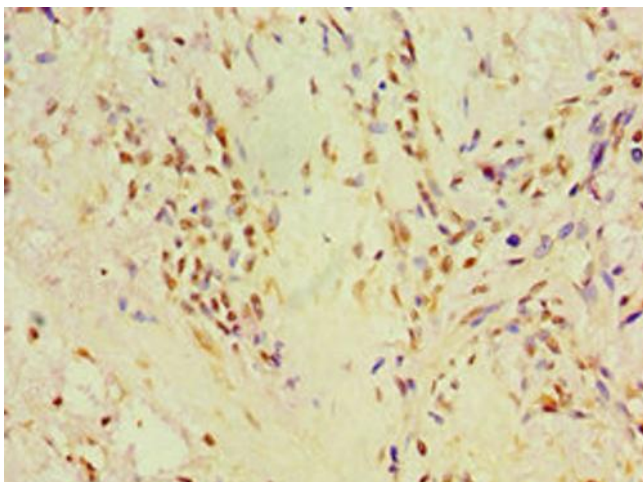
Product data:

Product Type:	Primary Antibodies
Applications:	IHC, IP, WB
Recommended Dilution:	Recommended dilution: WB:1:1000-1:5000, IHC:1:20-1:200, IP:1:200-1:2000
Reactivity:	Human
Host:	Rabbit
Isotype:	IgG
Clonality:	Polyclonal
Immunogen:	Recombinant Human Prolyl 4-hydroxylase subunit alpha-2 protein (236-535AA)
Formulation:	PBS with 0.02% sodium azide, 50% glycerol, pH7.3.
Concentration:	lot specific
Purification:	Antigen Affinity Purified
Conjugation:	Unconjugated
Storage:	Upon receipt, store at -20°C or -80°C. Avoid repeated freeze.
Stability:	1 year from dispatch.
Database Link:	O15460
Background:	Catalyzes the post-translational formation of 4-hydroxyproline in -Xaa-Pro-Gly- sequences in collagens and other proteins.

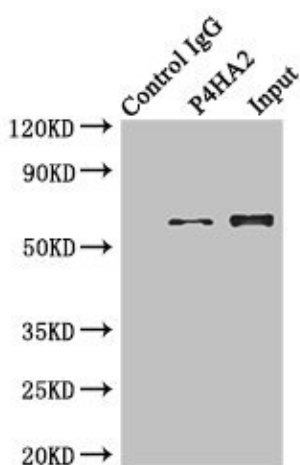


[View online »](#)

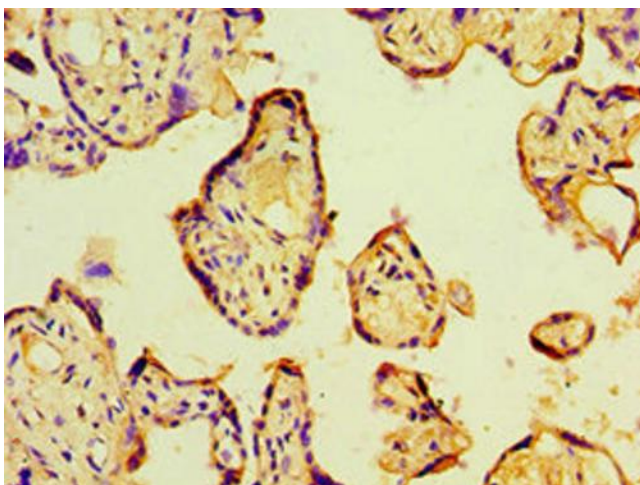
Product images:



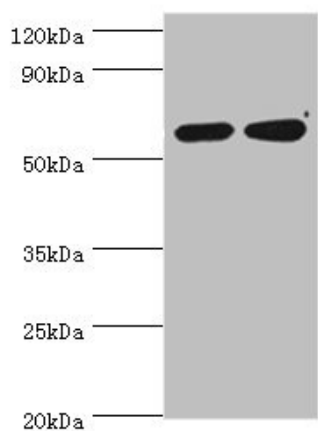
Immunohistochemistry of paraffin-embedded human breast cancer using [TA386916] at dilution of 1:100



Immunoprecipitating P4HA2 in Hela whole cell lysate
 Lane 1: Rabbit control IgG instead of (1 μ g) instead of [TA386916] in Hela whole cell lysate. For western blotting, a HRP-conjugated anti-rabbit IgG, specific to the non-reduced form of IgG was used as the Secondary antibody (1/50000)
 Lane 2: [TA386916] (4 μ g) + Hela whole cell lysate (500 μ g)
 Lane 3: Hela whole cell lysate (20 μ g)



Immunohistochemistry of paraffin-embedded human placenta tissue using [TA386916] at dilution of 1:100



Western blot
All lanes: P4HA2 antibody at 6 μ g/ml
Lane 1: HepG2 whole cell lysate
Lane 2: 293T whole cell lysate
Secondary
Goat polyclonal to rabbit IgG at 1/10000 dilution
Predicted band size: 61 kDa
Observed band size: 61 kDa