

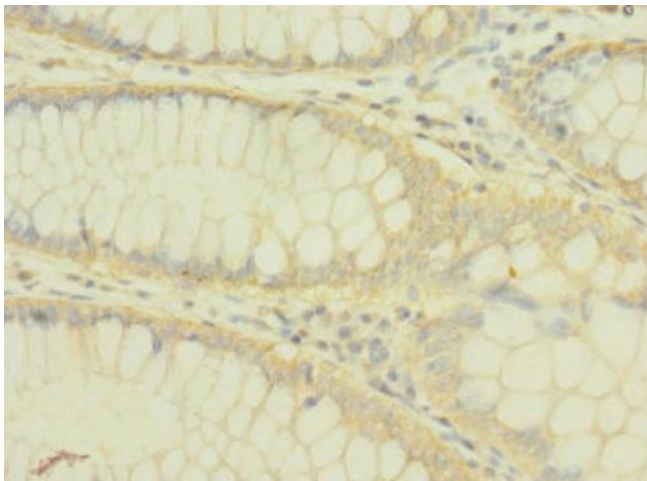
Product datasheet for **TA386913M**

PLXNB2 Rabbit Polyclonal Antibody

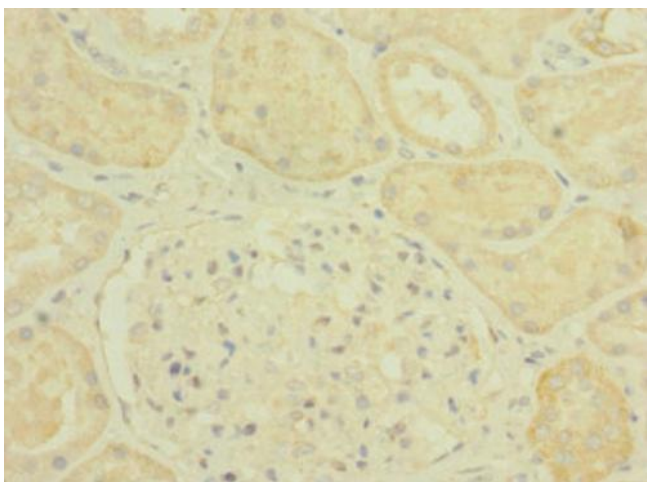
Product data:

Product Type:	Primary Antibodies
Applications:	IHC, WB
Recommended Dilution:	Recommended dilution: WB:1:1000-1:5000, IHC:1:20-1:200
Reactivity:	Mouse, Human
Host:	Rabbit
Isotype:	IgG
Clonality:	Polyclonal
Immunogen:	Recombinant Human Plexin-B2 protein (1080-1200AA)
Formulation:	PBS with 0.02% sodium azide, 50% glycerol, pH7.3.
Concentration:	lot specific
Purification:	Antigen Affinity Purified
Conjugation:	Unconjugated
Storage:	Upon receipt, store at -20°C or -80°C. Avoid repeated freeze.
Stability:	1 year from dispatch.
Database Link:	O15031
Background:	Cell surface receptor for SEMA4C, SEMA4D and SEMA4G that plays an important role in cell-cell signaling. Binding to class 4 semaphorins promotes downstream activation of RHOA and phosphorylation of ERBB2 at 'Tyr-1248'. Required for normal differentiation and migration of neuronal cells during brain corticogenesis and for normal embryonic brain development. Regulates the migration of cerebellar granule cells in the developing brain. Plays a role in RHOA activation and subsequent changes of the actin cytoskeleton. Plays a role in axon guidance, invasive growth and cell migration. May modulate the activity of RAC1 and CDC42. Down-regulates macrophage migration in wound-healing assays (in vitro) (By similarity).

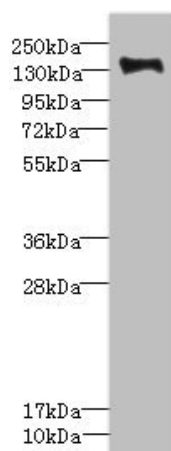

[View online »](#)

Product images:

Immunohistochemistry of paraffin-embedded human colon cancer using [TA386913] at dilution of 1:100



Immunohistochemistry of paraffin-embedded human kidney tissue using [TA386913] at dilution of 1:100



Western blot

All lanes: PLXNB2 antibody IgG at 2.39µg/ml +

Mouse liver tissue

Secondary

Goat polyclonal to rabbit IgG at 1/10000 dilution

Predicted band size: 205 kDa

Observed band size: 205 kDa