

## Product datasheet for **TA386913**

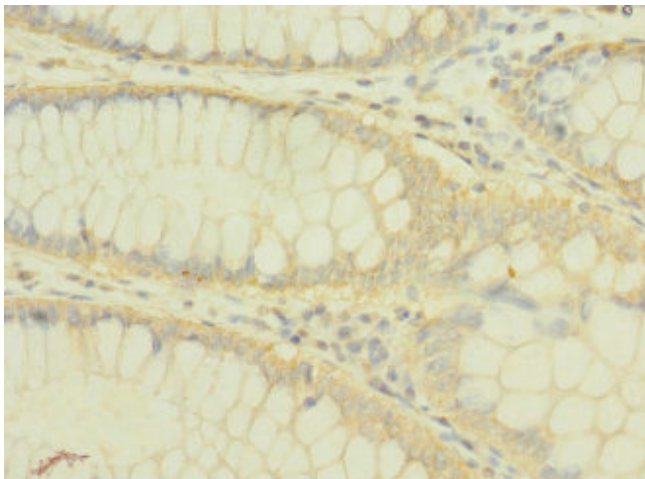
### PLXNB2 Rabbit Polyclonal Antibody

#### Product data:

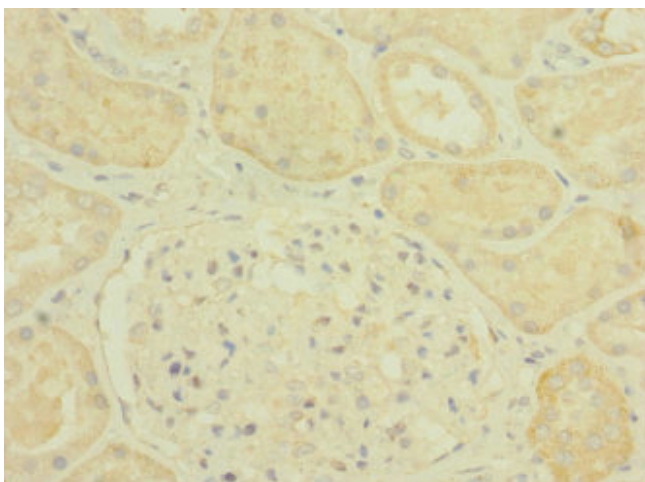
Product Type:	Primary Antibodies
Applications:	IHC, WB
Recommended Dilution:	Recommended dilution: WB:1:1000-1:5000, IHC:1:20-1:200
Reactivity:	Mouse, Human
Host:	Rabbit
Isotype:	IgG
Clonality:	Polyclonal
Immunogen:	Recombinant Human Plexin-B2 protein (1080-1200AA)
Formulation:	PBS with 0.02% sodium azide, 50% glycerol, pH7.3.
Concentration:	lot specific
Purification:	Antigen Affinity Purified
Conjugation:	Unconjugated
Storage:	Upon receipt, store at -20°C or -80°C. Avoid repeated freeze.
Stability:	1 year from dispatch.
Database Link:	<a href="#">O15031</a>
Background:	Cell surface receptor for SEMA4C, SEMA4D and SEMA4G that plays an important role in cell-cell signaling. Binding to class 4 semaphorins promotes downstream activation of RHOA and phosphorylation of ERBB2 at 'Tyr-1248'. Required for normal differentiation and migration of neuronal cells during brain corticogenesis and for normal embryonic brain development. Regulates the migration of cerebellar granule cells in the developing brain. Plays a role in RHOA activation and subsequent changes of the actin cytoskeleton. Plays a role in axon guidance, invasive growth and cell migration. May modulate the activity of RAC1 and CDC42. Down-regulates macrophage migration in wound-healing assays (in vitro) (By similarity).



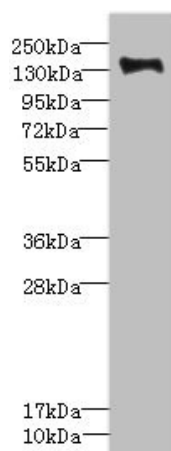
[View online »](#)

**Product images:**

Immunohistochemistry of paraffin-embedded human colon cancer using TA386913 at dilution of 1:100



Immunohistochemistry of paraffin-embedded human kidney tissue using TA386913 at dilution of 1:100



Western blot

All lanes: PLXNB2 antibody IgG at 2.39 $\mu$ g/ml +

Mouse liver tissue

Secondary

Goat polyclonal to rabbit IgG at 1/10000 dilution

Predicted band size: 205 kDa

Observed band size: 205 kDa