

Product datasheet for **TA386912M**

PPEF1 Rabbit Polyclonal Antibody

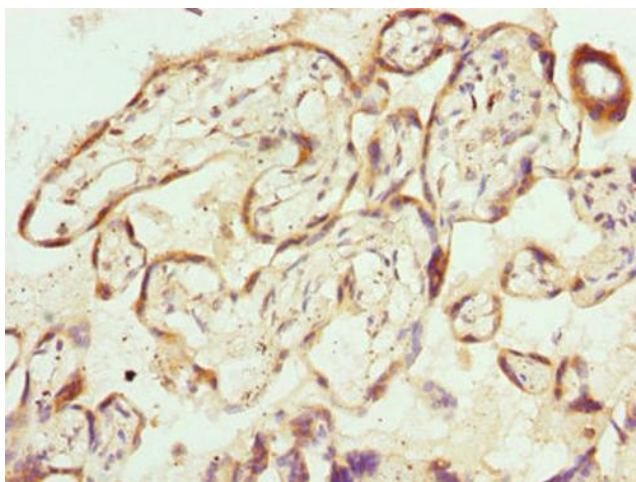
Product data:

Product Type:	Primary Antibodies
Applications:	IHC, WB
Recommended Dilution:	Recommended dilution: WB:1:500-1:2000, IHC:1:20-1:200
Reactivity:	Mouse, Human
Host:	Rabbit
Isotype:	IgG
Clonality:	Polyclonal
Immunogen:	Recombinant Human Serine/threonine-protein phosphatase with EF-hands 1 protein (301-500AA)
Formulation:	Preservative: 0.03% Proclin 300 Constituents: 50% Glycerol, 0.01M PBS, PH 7.4
Concentration:	lot specific
Purification:	Antigen Affinity Purified
Conjugation:	Unconjugated
Storage:	Upon receipt, store at -20°C or -80°C. Avoid repeated freeze.
Stability:	1 year from dispatch.
Database Link:	O14829
Background:	May have a role in the recovery or adaptation response of photoreceptors. May have a role in development.

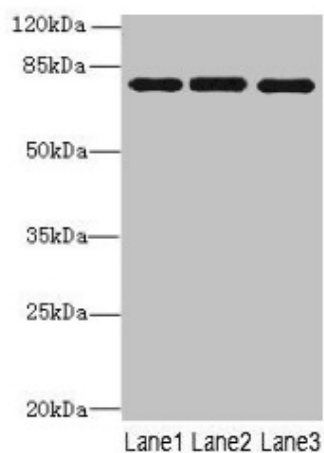


[View online »](#)

Product images:



Immunohistochemistry of paraffin-embedded human placenta tissue using [TA386912] at dilution of 1:100



Western blot
All lanes: PPEF1 antibody at 1 µg/ml
Lane 1: U251 whole cell lysate
Lane 2: A549 whole cell lysate
Lane 3: Mouse gonadal tissue
Secondary
Goat polyclonal to rabbit IgG at 1/10000 dilution
Predicted band size: 76, 70, 73, 45, 69 kDa
Observed band size: 76 kDa