

## Product datasheet for **TA386900M**

### **RCHY1 Rabbit Polyclonal Antibody**

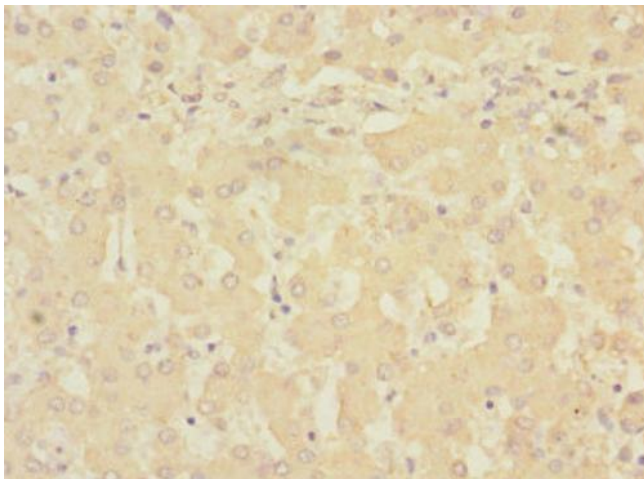
#### **Product data:**

|                       |                                                                                                                                                                                                                                                                                                                                             |
|-----------------------|---------------------------------------------------------------------------------------------------------------------------------------------------------------------------------------------------------------------------------------------------------------------------------------------------------------------------------------------|
| Product Type:         | Primary Antibodies                                                                                                                                                                                                                                                                                                                          |
| Applications:         | IHC, WB                                                                                                                                                                                                                                                                                                                                     |
| Recommended Dilution: | Recommended dilution: WB:1:1000-1:5000, IHC:1:20-1:200                                                                                                                                                                                                                                                                                      |
| Reactivity:           | Human                                                                                                                                                                                                                                                                                                                                       |
| Host:                 | Rabbit                                                                                                                                                                                                                                                                                                                                      |
| Isotype:              | IgG                                                                                                                                                                                                                                                                                                                                         |
| Clonality:            | Polyclonal                                                                                                                                                                                                                                                                                                                                  |
| Immunogen:            | Recombinant Human RING finger and CHY zinc finger domain-containing protein 1 protein (1-261AA)                                                                                                                                                                                                                                             |
| Formulation:          | PBS with 0.02% sodium azide, 50% glycerol, pH7.3.                                                                                                                                                                                                                                                                                           |
| Concentration:        | lot specific                                                                                                                                                                                                                                                                                                                                |
| Purification:         | Antigen Affinity Purified                                                                                                                                                                                                                                                                                                                   |
| Conjugation:          | Unconjugated                                                                                                                                                                                                                                                                                                                                |
| Storage:              | Upon receipt, store at -20°C or -80°C. Avoid repeated freeze.                                                                                                                                                                                                                                                                               |
| Stability:            | 1 year from dispatch.                                                                                                                                                                                                                                                                                                                       |
| Database Link:        | <a href="#">Q96PM5</a>                                                                                                                                                                                                                                                                                                                      |
| Background:           | Mediates E3-dependent ubiquitination and proteasomal degradation of target proteins, including p53/TP53, P73, HDAC1 and CDKN1B. Preferentially acts on tetrameric p53/TP53. Monoubiquitinates the translesion DNA polymerase POLH. Contributes to the regulation of the cell cycle progression. Increases AR transcription factor activity. |

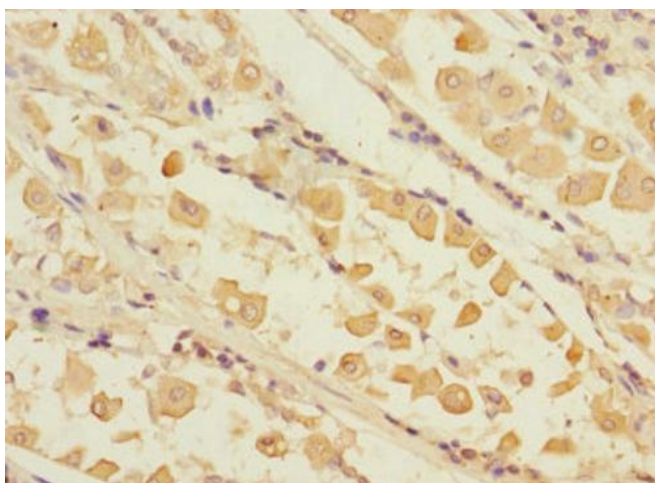


[View online »](#)

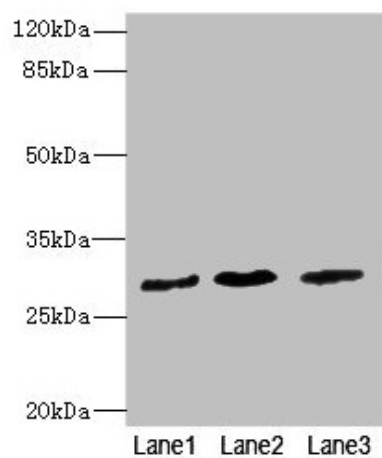
## Product images:



Immunohistochemistry of paraffin-embedded human liver tissue using [TA386900] at dilution of 1:100



Immunohistochemistry of paraffin-embedded human gastric cancer using [TA386900] at dilution of 1:100



#### Western blot

All lanes: RCHY1 antibody at 3.98µg/ml

Lane 1: SH-SY5Y whole cell lysate

Lane 2: 293T whole cell lysate

Lane 3: Hela whole cell lysate

Secondary

Goat polyclonal to rabbit IgG at 1/10000 dilution

Predicted band size: 31, 29, 21, 22, 9, 28, 26, 25 kDa

Observed band size: 31 kDa