

Product datasheet for **TA386900**

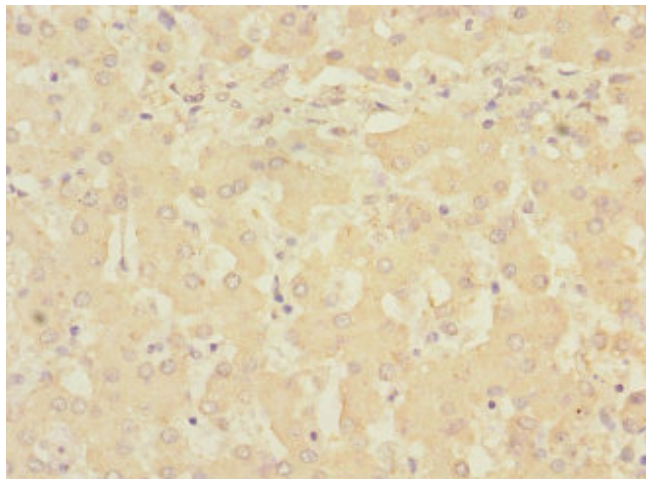
RCHY1 Rabbit Polyclonal Antibody

Product data:

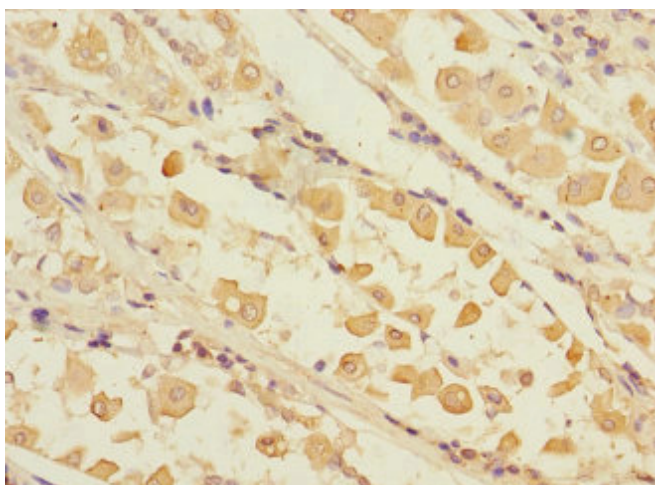
Product Type:	Primary Antibodies
Applications:	IHC, WB
Recommended Dilution:	Recommended dilution: WB:1:1000-1:5000, IHC:1:20-1:200
Reactivity:	Human
Host:	Rabbit
Isotype:	IgG
Clonality:	Polyclonal
Immunogen:	Recombinant Human RING finger and CHY zinc finger domain-containing protein 1 protein (1-261AA)
Formulation:	PBS with 0.02% sodium azide, 50% glycerol, pH7.3.
Concentration:	lot specific
Purification:	Antigen Affinity Purified
Conjugation:	Unconjugated
Storage:	Upon receipt, store at -20°C or -80°C. Avoid repeated freeze.
Stability:	1 year from dispatch.
Database Link:	Q96PM5
Background:	Mediates E3-dependent ubiquitination and proteasomal degradation of target proteins, including p53/TP53, P73, HDAC1 and CDKN1B. Preferentially acts on tetrameric p53/TP53. Monoubiquitinates the translesion DNA polymerase POLH. Contributes to the regulation of the cell cycle progression. Increases AR transcription factor activity.



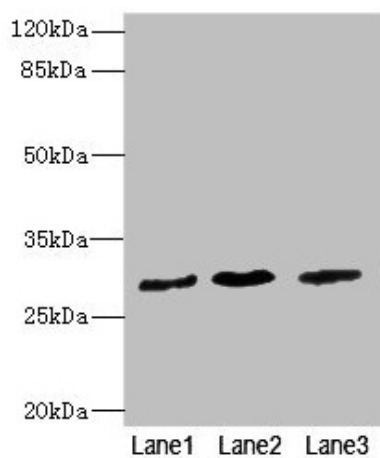
[View online »](#)

Product images:

Immunohistochemistry of paraffin-embedded human liver tissue using TA386900 at dilution of 1:100



Immunohistochemistry of paraffin-embedded human gastric cancer using TA386900 at dilution of 1:100

**Western blot**

All lanes: RCHY1 antibody at 3.98 μ g/ml

Lane 1: SH-SY5Y whole cell lysate

Lane 2: 293T whole cell lysate

Lane 3: Hela whole cell lysate

Secondary

Goat polyclonal to rabbit IgG at 1/10000 dilution

Predicted band size: 31, 29, 21, 22, 9, 28, 26, 25 kDa

Observed band size: 31 kDa