

## Product datasheet for **TA386899**

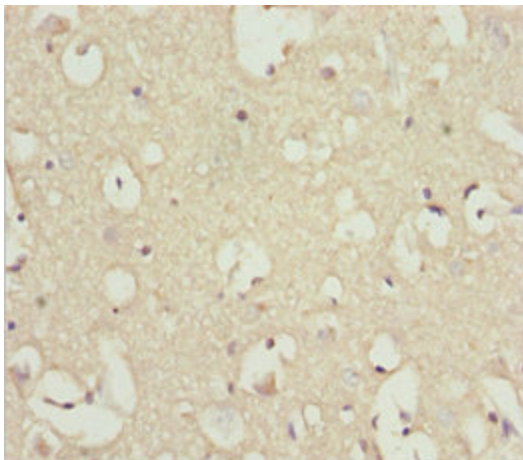
### INPP4A Rabbit Polyclonal Antibody

#### Product data:

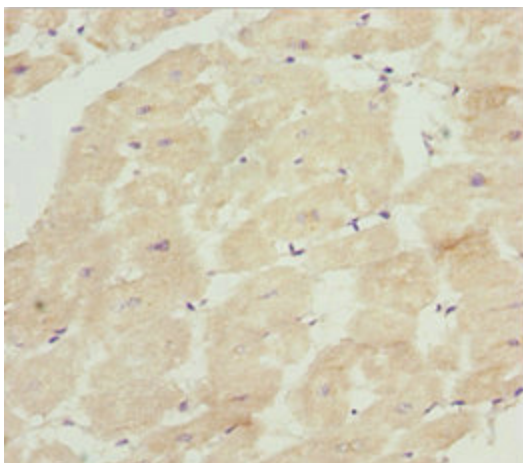
Product Type:	Primary Antibodies
Applications:	IHC, WB
Recommended Dilution:	Recommended dilution: WB:1:1000-1:5000, IHC:1:20-1:200
Reactivity:	Mouse, Human
Host:	Rabbit
Isotype:	IgG
Clonality:	Polyclonal
Immunogen:	Recombinant Human Type I inositol 3,4-bisphosphate 4-phosphatase protein (1-250AA)
Formulation:	PBS with 0.02% sodium azide, 50% glycerol, pH7.3.
Concentration:	lot specific
Purification:	Antigen Affinity Purified
Conjugation:	Unconjugated
Storage:	Upon receipt, store at -20°C or -80°C. Avoid repeated freeze.
Stability:	1 year from dispatch.
Database Link:	<a href="#">Q96PE3</a>
Background:	Catalyzes the hydrolysis of the 4-position phosphate of phosphatidylinositol 3,4-bisphosphate, inositol 1,3,4-trisphosphate and inositol 3,4-bisphosphate.



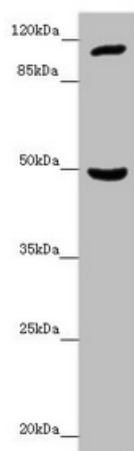
[View online »](#)

**Product images:**

Immunohistochemistry of paraffin-embedded human brain tissue using TA386899 at dilution of 1:100



Immunohistochemistry of paraffin-embedded human heart tissue using TA386899 at dilution of 1:100



Western blot

All lanes: INPP4A antibody at 7.06  $\mu\text{g/ml}$  + Mouse brain tissue

Secondary

Goat polyclonal to rabbit IgG at 1/10000 dilution

Predicted band size: 110, 106, 108 kDa

Observed band size: 110, 48 kDa