

Product datasheet for **TA386897M**

ATAD1 Rabbit Polyclonal Antibody

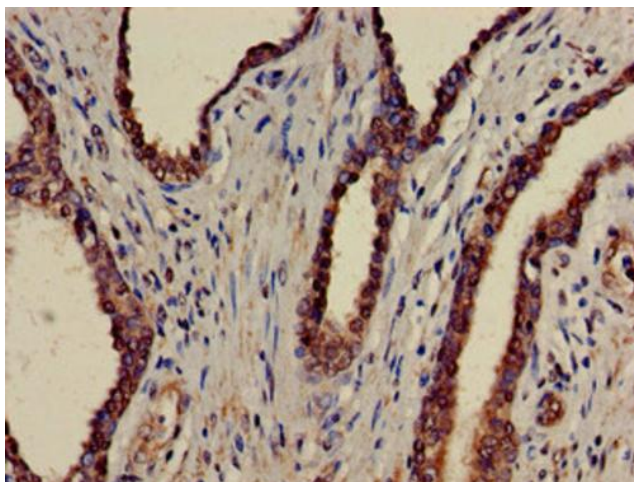
Product data:

Product Type:	Primary Antibodies
Applications:	IHC, WB
Recommended Dilution:	Recommended dilution: WB:1:500-1:5000, IHC:1:20-1:200
Reactivity:	Mouse, Rat, Human
Host:	Rabbit
Isotype:	IgG
Clonality:	Polyclonal
Immunogen:	Recombinant Human ATPase family AAA domain-containing protein 1 protein (289-350AA)
Formulation:	Preservative: 0.03% Proclin 300 Constituents: 50% Glycerol, 0.01M PBS, pH 7.4
Concentration:	lot specific
Purification:	>95%, Protein G purified
Conjugation:	Unconjugated
Storage:	Upon receipt, store at -20°C or -80°C. Avoid repeated freeze.
Stability:	1 year from dispatch.
Database Link:	Q8NBU5
Background:	ATPase that plays a critical role in regulating the surface expression of AMPA receptors (AMPA), thereby regulating synaptic plasticity and learning and memory. Required for NMDA-stimulated AMPAR internalization and inhibition of GRIA1 and GRIA2 recycling back to the plasma membrane; these activities are ATPase-dependent (By similarity).

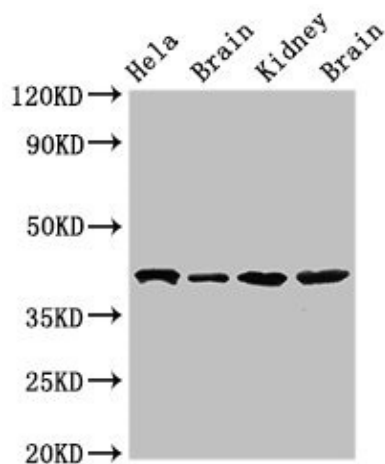


[View online »](#)

Product images:



Immunohistochemistry of paraffin-embedded human prostate cancer using [TA386897] at dilution of 1:100



Western Blot
Positive WB detected in: HeLa whole cell lysate, Rat brain tissue, Mouse kidney tissue, Mouse brain tissue
All lanes: ATAD1 antibody at 4 μ g/ml
Secondary
Goat polyclonal to rabbit IgG at 1/50000 dilution
Predicted band size: 41, 33 kDa
Observed band size: 41 kDa