

Product datasheet for **TA386890M**

RPS2 Rabbit Polyclonal Antibody

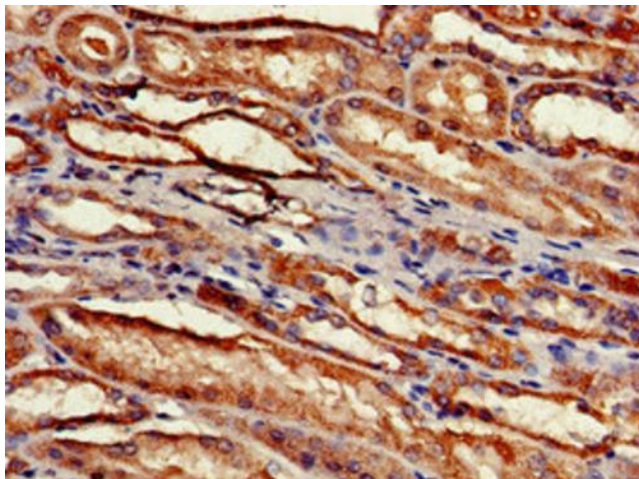
Product data:

Product Type:	Primary Antibodies
Applications:	IF, IHC, WB
Recommended Dilution:	Recommended dilution: WB:1:500-1:5000, IHC:1:20-1:200, IF:1:50-1:200
Reactivity:	Mouse, Human
Host:	Rabbit
Isotype:	IgG
Clonality:	Polyclonal
Immunogen:	Recombinant Human 40S ribosomal protein S2 protein (2-61AA)
Formulation:	Preservative: 0.03% Proclin 300 Constituents: 50% Glycerol, 0.01M PBS, pH 7.4
Concentration:	lot specific
Purification:	>95%, Protein G purified
Conjugation:	Unconjugated
Storage:	Upon receipt, store at -20°C or -80°C. Avoid repeated freeze.
Stability:	1 year from dispatch.
Database Link:	P15880
Background:	cell-cell adherens junction, cytoplasm, cytosol, cytosolic small ribosomal subunit, extracellular exosome, focal adhesion, membrane, nucleoplasm, nucleus, cadherin binding involved in cell-cell adhesion

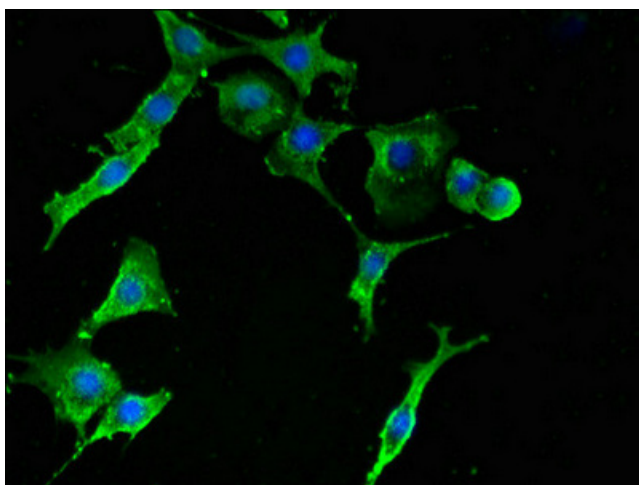


[View online »](#)

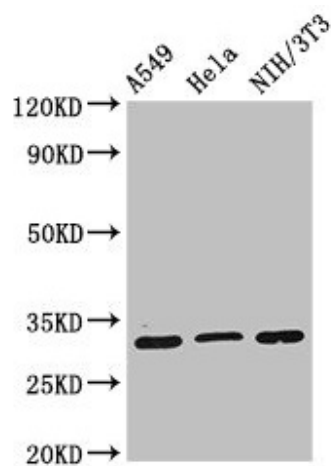
Product images:



Immunohistochemistry of paraffin-embedded human kidney tissue using [TA386890] at dilution of 1:100



Immunofluorescent analysis of MCF-7 cells using [TA386890] at dilution of 1:100 and Alexa Fluor 488-conjugated AffiniPure Goat Anti-Rabbit IgG(H+L)



Western Blot

Positive WB detected in: A549 whole cell lysate, HeLa whole cell lysate, NIH/3T3 whole cell lysate
All lanes: RPS2 antibody at 2µg/ml

Secondary

Goat polyclonal to rabbit IgG at 1/50000 dilution

Predicted band size: 32 kDa

Observed band size: 32 kDa