

Product datasheet for **TA386888M**

CD3G Rabbit Polyclonal Antibody

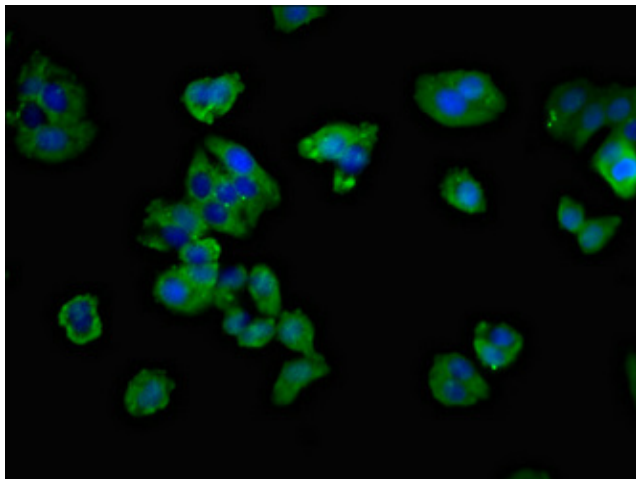
Product data:

Product Type:	Primary Antibodies
Applications:	IF, WB
Recommended Dilution:	Recommended dilution: WB:1:500-1:5000, IF:1:50-1:200
Reactivity:	Mouse, Rat, Human
Host:	Rabbit
Isotype:	IgG
Clonality:	Polyclonal
Immunogen:	Recombinant Human T-cell surface glycoprotein CD3 gamma chain protein (138-182AA)
Formulation:	Preservative: 0.03% Proclin 300 Constituents: 50% Glycerol, 0.01M PBS, pH 7.4
Concentration:	lot specific
Purification:	>95%, Protein G purified
Conjugation:	Unconjugated
Storage:	Upon receipt, store at -20°C or -80°C. Avoid repeated freeze.
Stability:	1 year from dispatch.
Database Link:	P09693
Background:	The CD3 complex mediates signal transduction.

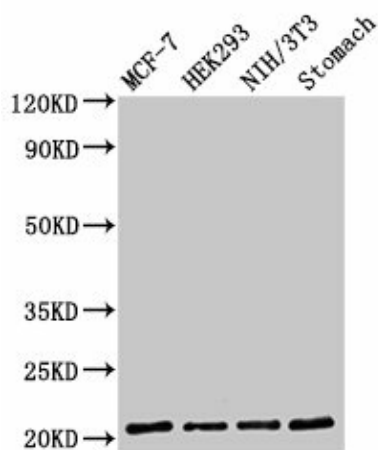


[View online »](#)

Product images:



Immunofluorescent analysis of HepG2 cells using [TA386888] at dilution of 1:100 and Alexa Fluor 488-conjugated AffiniPure Goat Anti-Rabbit IgG(H+L)



Western Blot
 Positive WB detected in: MCF-7 whole cell lysate, HEK293 whole cell lysate, NIH/3T3 whole cell lysate, Rat stomach tissue
 All lanes: CD3G antibody at 2µg/ml
 Secondary
 Goat polyclonal to rabbit IgG at 1/50000 dilution
 Predicted band size: 21 kDa
 Observed band size: 21 kDa