

Product datasheet for **TA386887M**

GSTA1 Rabbit Polyclonal Antibody

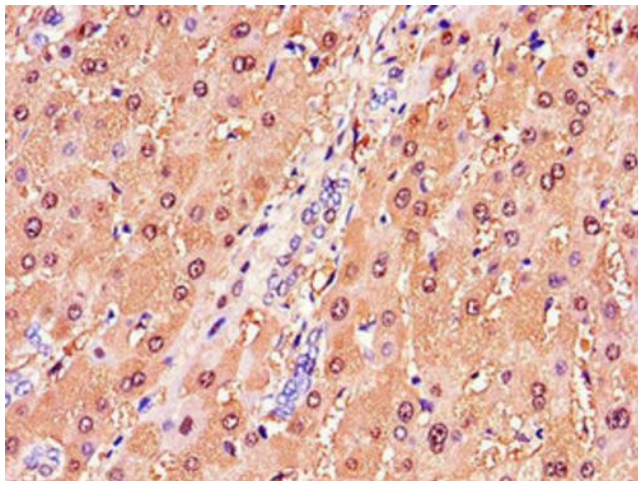
Product data:

Product Type:	Primary Antibodies
Applications:	IF, IHC, WB
Recommended Dilution:	Recommended dilution: WB:1:1000-1:5000, IHC:1:20-1:200, IF:1:50-1:200
Reactivity:	Mouse, Human
Host:	Rabbit
Isotype:	IgG
Clonality:	Polyclonal
Immunogen:	Recombinant Human Glutathione S-transferase A1 protein (2-222AA)
Formulation:	Preservative: 0.03% Proclin 300 Constituents: 50% Glycerol, 0.01M PBS, PH 7.4
Concentration:	lot specific
Purification:	>95%, Protein G purified
Conjugation:	Unconjugated
Storage:	Upon receipt, store at -20°C or -80°C. Avoid repeated freeze.
Stability:	1 year from dispatch.
Database Link:	P08263
Background:	Conjugation of reduced glutathione to a wide number of exogenous and endogenous hydrophobic electrophiles.

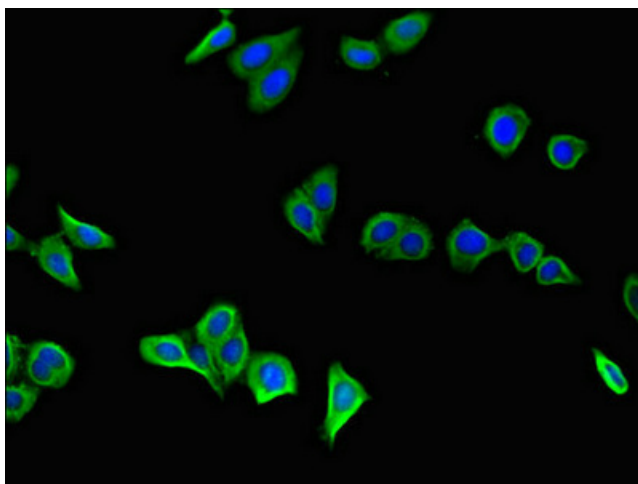


[View online »](#)

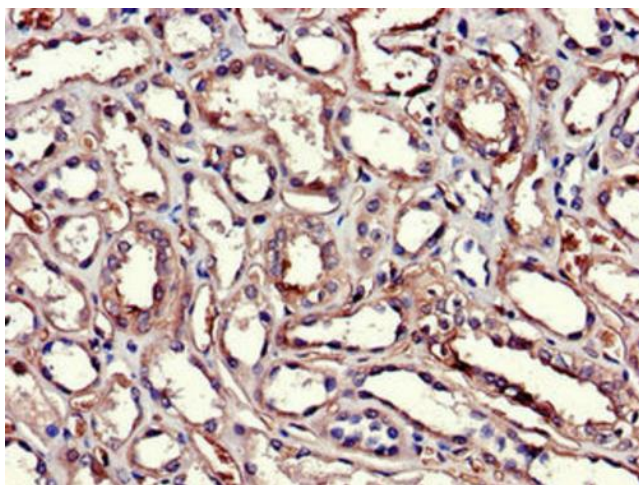
Product images:



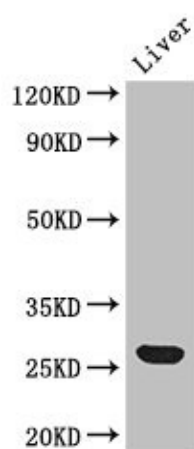
Immunohistochemistry of paraffin-embedded human liver tissue using [TA386887] at dilution of 1:100



Immunofluorescent analysis of HepG2 cells using [TA386887] at dilution of 1:100 and Alexa Fluor 488-conjugated AffiniPure Goat Anti-Rabbit IgG(H+L)



Immunohistochemistry of paraffin-embedded human kidney tissue using [TA386887] at dilution of 1:100



Western Blot
Positive WB detected in: Mouse liver tissue
All lanes: Gsta1 antibody at 2.7µg/ml
Secondary
Goat polyclonal to rabbit IgG at 1/50000 dilution
Predicted band size: 26 kDa
Observed band size: 26 kDa