

## Product datasheet for **TA386887**

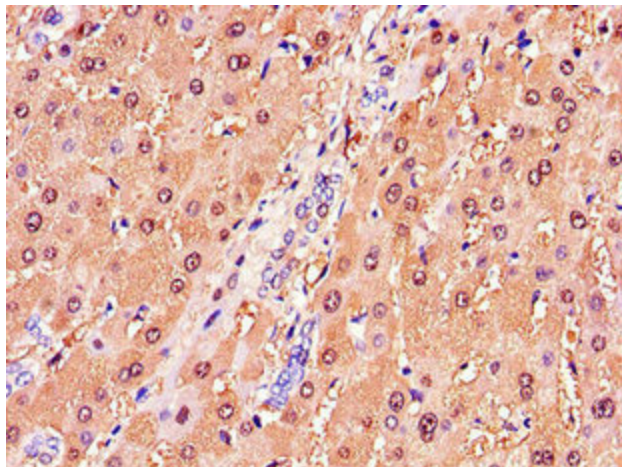
### **GSTA1 Rabbit Polyclonal Antibody**

#### **Product data:**

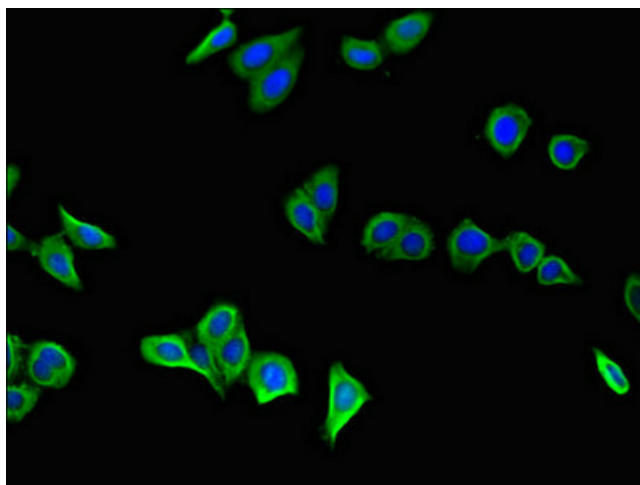
<b>Product Type:</b>	Primary Antibodies
<b>Applications:</b>	IF, IHC, WB
<b>Recommended Dilution:</b>	Recommended dilution: WB:1:1000-1:5000, IHC:1:20-1:200, IF:1:50-1:200
<b>Reactivity:</b>	Mouse, Human
<b>Host:</b>	Rabbit
<b>Isotype:</b>	IgG
<b>Clonality:</b>	Polyclonal
<b>Immunogen:</b>	Recombinant Human Glutathione S-transferase A1 protein (2-222AA)
<b>Formulation:</b>	Preservative: 0.03% Proclin 300 Constituents: 50% Glycerol, 0.01M PBS, PH 7.4
<b>Concentration:</b>	lot specific
<b>Purification:</b>	>95%, Protein G purified
<b>Conjugation:</b>	Unconjugated
<b>Storage:</b>	Upon receipt, store at -20°C or -80°C. Avoid repeated freeze.
<b>Stability:</b>	1 year from dispatch.
<b>Database Link:</b>	<a href="#">P08263</a>
<b>Background:</b>	Conjugation of reduced glutathione to a wide number of exogenous and endogenous hydrophobic electrophiles.



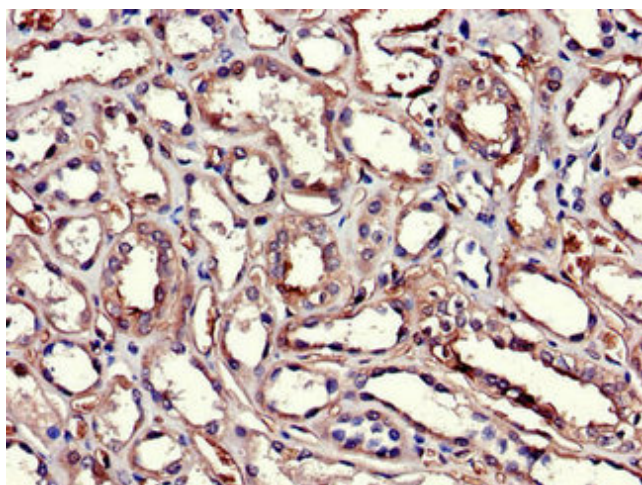
[View online »](#)

**Product images:**

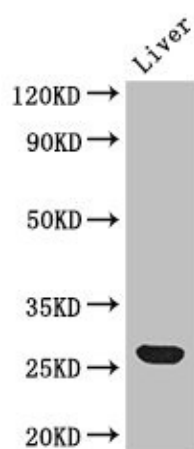
Immunohistochemistry of paraffin-embedded human liver tissue using TA386887 at dilution of 1:100



Immunofluorescent analysis of HepG2 cells using TA386887 at dilution of 1:100 and Alexa Fluor 488-conjugated AffiniPure Goat Anti-Rabbit IgG(H+L)



Immunohistochemistry of paraffin-embedded human kidney tissue using TA386887 at dilution of 1:100



Western Blot  
Positive WB detected in: Mouse liver tissue  
All lanes: Gsta1 antibody at 2.7 $\mu$ g/ml  
Secondary  
Goat polyclonal to rabbit IgG at 1/50000 dilution  
Predicted band size: 26 kDa  
Observed band size: 26 kDa