

Product datasheet for **TA386886M**

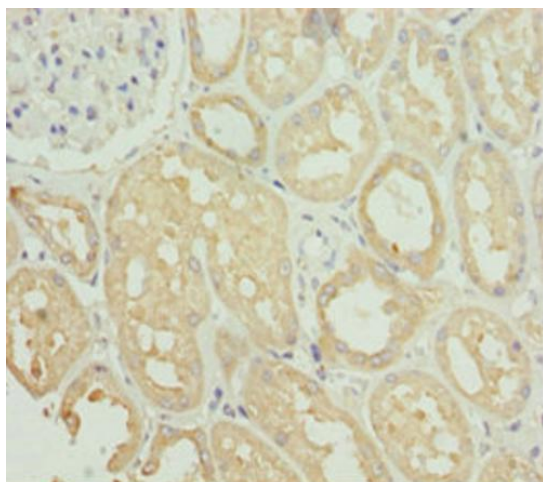
SNAP29 Rabbit Polyclonal Antibody

Product data:

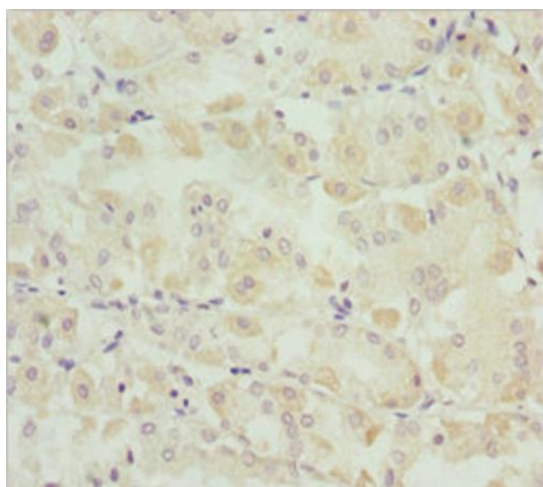
Product Type:	Primary Antibodies
Applications:	IHC, WB
Recommended Dilution:	Recommended dilution: WB:1:1000-1:5000, IHC:1:20-1:200
Reactivity:	Human
Host:	Rabbit
Isotype:	IgG
Clonality:	Polyclonal
Immunogen:	Recombinant Human Synaptosomal-associated protein 29 protein (1-258AA)
Formulation:	PBS with 0.02% sodium azide, 50% glycerol, pH7.3.
Concentration:	lot specific
Purification:	Antigen Affinity Purified
Conjugation:	Unconjugated
Storage:	Upon receipt, store at -20°C or -80°C. Avoid repeated freeze.
Stability:	1 year from dispatch.
Database Link:	O95721
Background:	SNAREs, soluble N-ethylmaleimide-sensitive factor-attachment protein receptors, are essential proteins for fusion of cellular membranes. SNAREs localized on opposing membranes assemble to form a trans-SNARE complex, an extended, parallel four alpha-helical bundle that drives membrane fusion. SNAP29 is a SNARE involved in autophagy through the direct control of autophagosome membrane fusion with the lysosome membrane. Plays also a role in ciliogenesis by regulating membrane fusions.



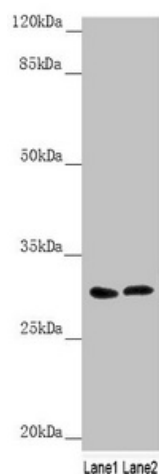
[View online »](#)

Product images:


Immunohistochemistry of paraffin-embedded human kidney tissue using [TA386886] at dilution of 1:100



Immunohistochemistry of paraffin-embedded human gastric cancer using [TA386886] at dilution of 1:100



Western blot

All lanes: SNAP29 antibody at 1.79µg/ml

Lane 1: 293T whole cell lysate

Lane 2: Jurkat whole cell lysate

Secondary

Goat polyclonal to rabbit IgG at 1/10000 dilution

Predicted band size: 29 kDa

Observed band size: 29 kDa