

## Product datasheet for **TA386877**

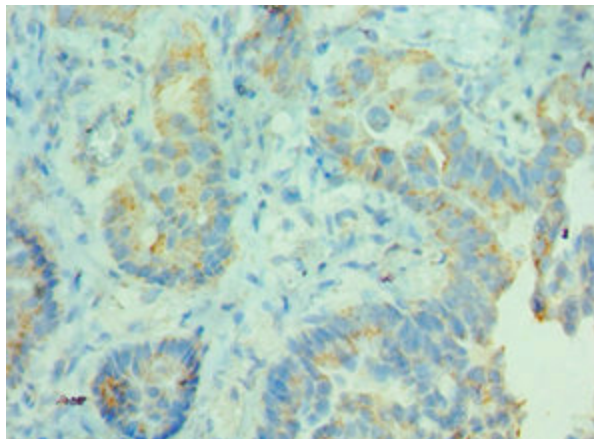
### MDH2 Rabbit Polyclonal Antibody

#### Product data:

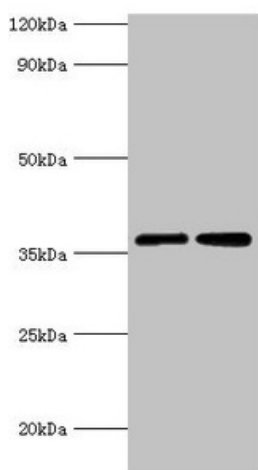
Product Type:	Primary Antibodies
Applications:	IHC, WB
Recommended Dilution:	Recommended dilution: WB:1:500-1:2000, IHC:1:20-1:200
Reactivity:	Human
Host:	Rabbit
Isotype:	IgG
Clonality:	Polyclonal
Immunogen:	Recombinant Human Malate dehydrogenase, mitochondrial protein (59-338AA)
Formulation:	PBS with 0.02% sodium azide, 50% glycerol, pH7.3.
Concentration:	lot specific
Purification:	Antigen Affinity Purified
Conjugation:	Unconjugated
Storage:	Upon receipt, store at -20°C or -80°C. Avoid repeated freeze.
Stability:	1 year from dispatch.
Database Link:	<a href="#">P40926</a>



[View online »](#)

**Product images:**

Immunohistochemistry of paraffin-embedded human lung cancer using TA386877 at dilution of 1:100



Western blot  
All lanes: MDH2 antibody at 3 $\mu$ g/ml  
Lane 1: 293T whole cell lysate  
Lane 2: K562 whole cell lysate  
Secondary  
Goat polyclonal to rabbit IgG at 1/10000 dilution  
Predicted band size: 36, 31 kDa  
Observed band size: 36 kDa