

Product datasheet for **TA386875M**

STOM Rabbit Polyclonal Antibody

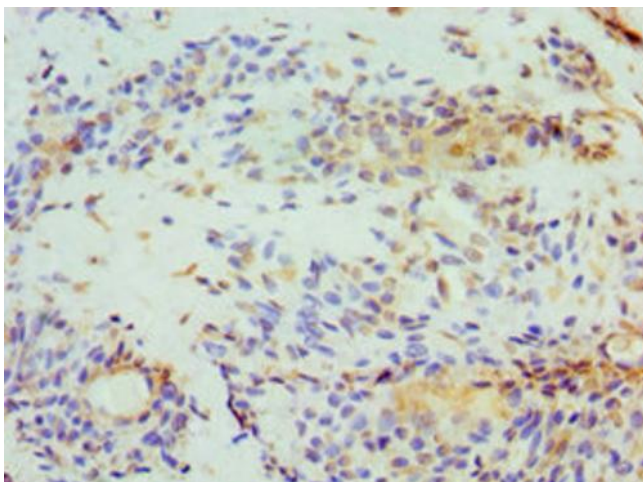
Product data:

Product Type:	Primary Antibodies
Applications:	IHC, WB
Recommended Dilution:	Recommended dilution: WB:1:200-1:1000, IHC:1:20-1:200
Reactivity:	Mouse, Human
Host:	Rabbit
Isotype:	IgG
Clonality:	Polyclonal
Immunogen:	Recombinant Human Erythrocyte band 7 integral membrane protein (55-288AA)
Formulation:	PBS with 0.02% sodium azide, 50% glycerol, pH7.3.
Concentration:	lot specific
Purification:	Antigen Affinity Purified
Conjugation:	Unconjugated
Storage:	Upon receipt, store at -20°C or -80°C. Avoid repeated freeze.
Stability:	1 year from dispatch.
Database Link:	P27105
Background:	Regulates ion channel activity and transmembrane ion transport. Regulates ASIC2 and ASIC3 channel activity.

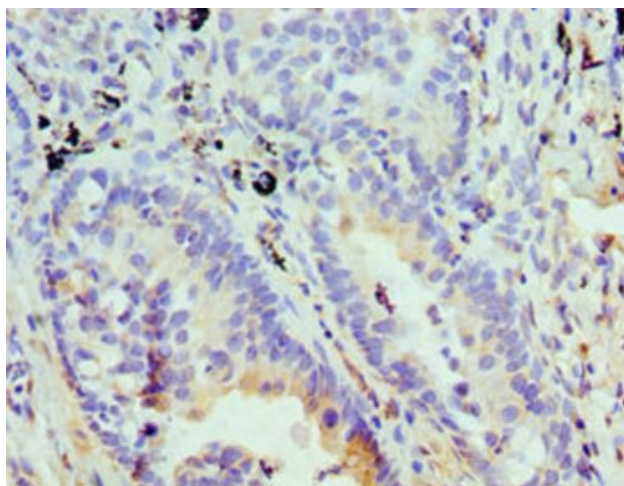


[View online »](#)

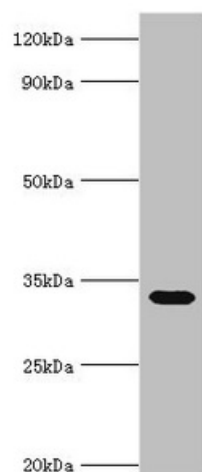
Product images:



Immunohistochemistry of paraffin-embedded human breast cancer using [TA386875] at dilution of 1:100



Immunohistochemistry of paraffin-embedded human lung cancer using [TA386875] at dilution of 1:100



Western blot

All lanes: Erythrocyte band 7 integral membrane protein antibody at 5µg/ml + Mouse liver tissue
Secondary

Goat polyclonal to rabbit IgG at 1/10000 dilution

Predicted band size: 32, 14 kDa

Observed band size: 32 kDa