

## Product datasheet for **TA386873M**

### NDUFS6 Rabbit Polyclonal Antibody

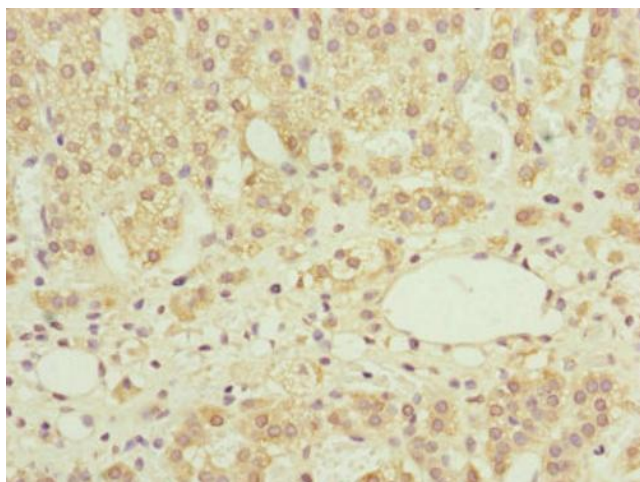
#### Product data:

|                       |   |
|-----------------------|---|
| Product Type:         | Primary Antibodies  |
| Applications:         | IHC, WB   |
| Recommended Dilution: | Recommended dilution: WB:1:1000-1:5000, IHC:1:20-1:200  |
| Reactivity:           | Human   |
| Host:                 | Rabbit  |
| Isotype:              | IgG   |
| Clonality:            | Polyclonal  |
| Immunogen:            | Recombinant Human NADH dehydrogenase [ubiquinone] iron-sulfur protein 6, mitochondrial (29-124AA)   |
| Formulation:          | PBS with 0.02% sodium azide, 50% glycerol, pH7.3.   |
| Concentration:        | lot specific  |
| Purification:         | Antigen Affinity Purified   |
| Conjugation:          | Unconjugated  |
| Storage:              | Upon receipt, store at -20°C or -80°C. Avoid repeated freeze.   |
| Stability:            | 1 year from dispatch.   |
| Database Link:        | <a href="#">Q75380</a>  |
| Background:           | Accessory subunit of the mitochondrial membrane respiratory chain NADH dehydrogenase (Complex I), that is believed not to be involved in catalysis. Complex I functions in the transfer of electrons from NADH to the respiratory chain. The immediate electron acceptor for the enzyme is believed to be ubiquinone. |

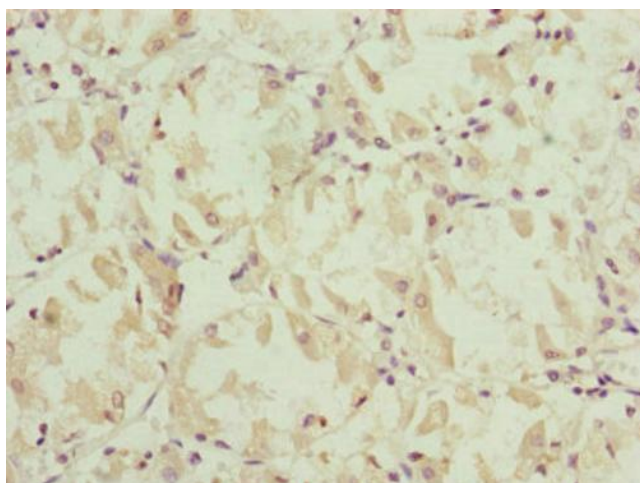


[View online »](#)

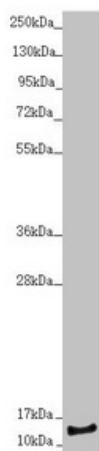
## Product images:



Immunohistochemistry of paraffin-embedded human adrenal gland tissue using [TA386873] at dilution of 1:100



Immunohistochemistry of paraffin-embedded human gastric cancer using [TA386873] at dilution of 1:100



Western blot

All lanes: NDUFS6 antibody at 1.67µg/ml + HepG2 whole cell lysate

Secondary

Goat polyclonal to rabbit IgG at 1/10000 dilution

Predicted band size: 14 kDa

Observed band size: 14 kDa